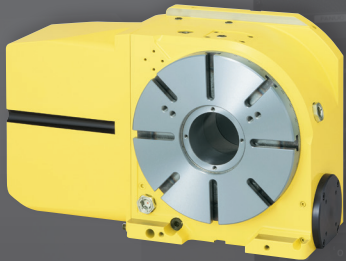


NIKKEN

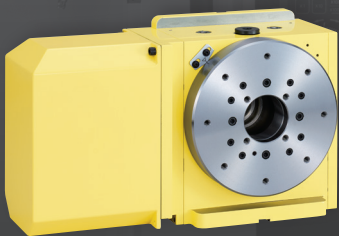
CNC ROTARY TABLES & BT30 TOOL HOLDERS

For FANUC Robodrill

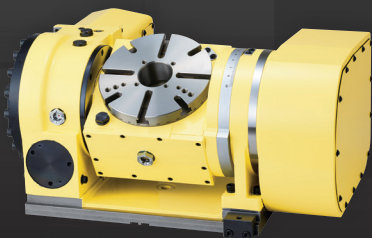
FANUC



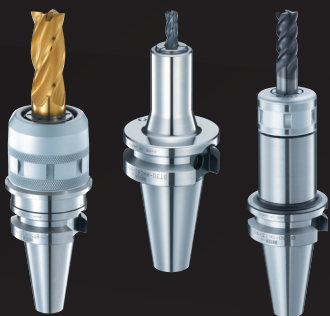
CNC260PLFA



NCT200LFA



5AX-201FA



BT30 TOOLING



LYNDEX NIKKEN

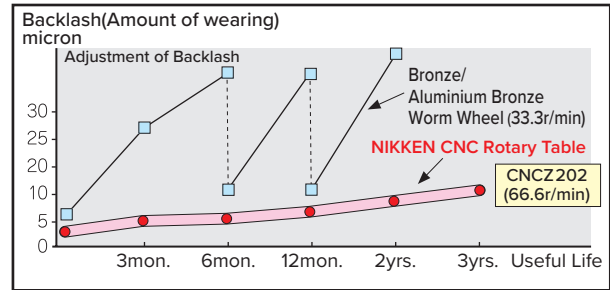
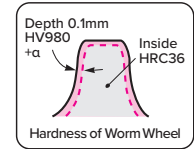
lyndexnikken.com

ANTI-WEARING, HIGH RIGIDITY AND HIGH-SPEED ROTATION



WORM WHEEL

Specially hardened and ion-nitrided gear teeth reduce sliding friction. The hardness of the tooth surface and inside is shown in the image on the right.



It is not exaggeration that the most important parts of the CNC rotary table is the worm system. Please choose NIKKEN CNC rotary table with special worm system for our anti-wearing, high rigidity and high speed rotation.

CNC ROTARY TABLE FOR ROBODRILL



When mounting a CNC ROTARY TABLE on ROBODRILL, the machine needs an additional axis option. (Servo amplifier, connector unit, etc.)

You need to be careful when using CNC ROTARY tables in foreign countries. In the case of machines for Europe and China, the connector unit is different from that for general use. Please contact the machine specifications when ordering. If you want to mount the tilt CNC rotary table on a machine that supports only one additional axis, or if you can not prepare the additional axis, you can select with a NIKKEN controller.

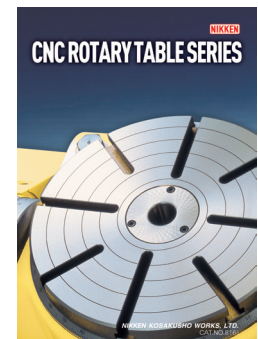
ROBODRILL α -DSiB5 Plus Series	
α -D14SiB5 Plus / α -D14SiB5ADV Plus	CNC105LFA CNC205LFA
α -D21SiB5 Plus / α -D21SiB5ADV Plus	5AX-100FA 5AX-DD100AF

TEC	TECHNICAL INFORMATION: P.13	<ul style="list-style-type: none"> • Relation between Unbalancing Load and Servo Motor • Flow Chart of the Additional Axis Control • Notes on the Use of DD TABLES
-----	-----------------------------	---

TOOL	NIKKEN TOOL HOLDER: P.15
------	--------------------------

ROBODRILL α -DMiB5 Plus Series	
α -D14SiB5 Plus / α -D14SiB5ADV Plus	CNC180LFA CNC202LFA CNC205FA
α -D21SiB5 Plus / α -D21SiB5ADV Plus	CNC260PLFA NCT200LFA
α -D14SiB5 Plus / α -D14SiB5ADV Plus	NCT200ELFA 5AX-130FA
α -D21SiB5 Plus / α -D21SiB5ADV Plus	5AX-201FA 5AX-DD200AF2 5AX-DD201BF3

For details on optional specifications and accessories for CNC Rotary Tables, please refer to the CNC Rotary Table Catalog.



HOW TO SELECT YOUR BEST CNC ROTARY TABLE



How CNC Rotary Table is Controlled:

Additional Axis

You can choose additional axis when the machine has 4th or 5th axis. CNC rotary table can be controlled by machine in this case.

1. 4th or 5th amplifier is required for the machine. It should be used exactly the same one used for X, Y and Z axis. Install same servomotor(s) used for X, Y and Z axis.
2. The type of the servomotor or amplifier is defined by the types of rotary table.
3. Decide by whom servomotor will be supplied.
4. External dimensions and specifications depend on the type of servomotor.
5. Parameter configuration, hydraulic connection, wiring and installation of amplifiers should be provided by machine tool builders.

4th (or 5th) AXIS M/C

NIKKEN Controller (M-signal)

You can choose NIKKEN Controller when the machine doesn't have additional axis.

Note: at least one M-signal code is required.

1. At least one M-Signal is required on the machine.
2. Input M-signal as "index start" command on the machine, high accuracy indexing, equally divided indexing (2-9999), or lead operation is allowed.
3. Control unit, servo-motor and all cables will be supplied by NIKKEN.

3th AXIS M/C

HOW TO READ PRODUCT CODE



CNC 180 L F A - M

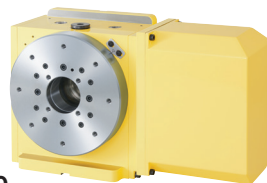
- Code No. of vertical/horizontal type CNC rotary table: CNC : Standard, CNCZ : High Speed
- Diameter of the rotary table face plate (mm)
- Motor mounting location: Non: Right mount, L: Left mount
- Motor maker (+Code No.)
- Type of motor: Non: DC servo, A: AC servo
- With / without Motor: Non: without motor, M: with motor

M-signal CTRL	*Code No.
AR21Controller +5AX : Both Axis +5AX : Each Axis EZController	AR21 WAR21 DAR21 EZ
Makers for Additional Axis CTRL	*Code No.
FANUC	F

Single Axis CNC Rotary Table

NCT200 EL F A - M

- Code No. of vertical/horizontal type CNC rotary table: NCT : Standard, NCTZ : High Speed
- Diameter of the rotary table face plate (mm)
- Face Plate: W/O Face Plate : E, With Face Plate : No Letter
- Motor mounting location: Non: Right mount, L: Left mount
- Motor maker
- Type of motor: Non: DC servo, A: AC servo
- With/without Motor: Non: without motor, M: with motor

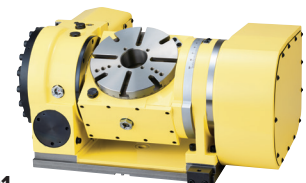


NCT200

5AX Rotary & Tilting Table

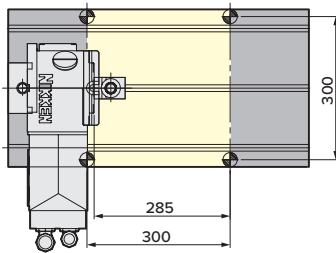
5AX-201 F A - M

- Code No. of Rotary & Tilting Table
- Diameter of the table face plate (mm)
- Motor maker
- Type of motor: Non: DC servo, A: AC servo
- With/without Motor: Non: without motor, M: with motor



5AX-201

CNC105LFA

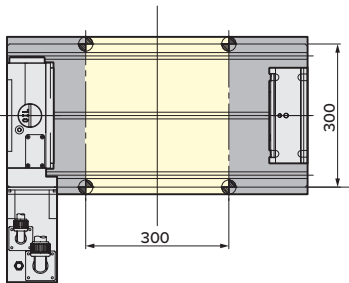


COMPACT CNC ROTARY TABLE

Diameter of Table:	$\phi 105\text{mm}$
MAX. Work Load:	30kg
MAX. Rotation Speed:	33.3 (r/min), 66.6 (r/min) *1
Indexing Accuracy:	$\pm 30\text{sec.}$
Brake Torque:	205Nm
Net Weight:	30kg
Servo Motor:	α 2iS/5000 or α 2iF/5000
Spindle Hole:	$\phi 60\text{mm}_{H7} \times \phi 30\text{mm}$ Through Hole

*1: High speed Z series

CNCZ205LFA

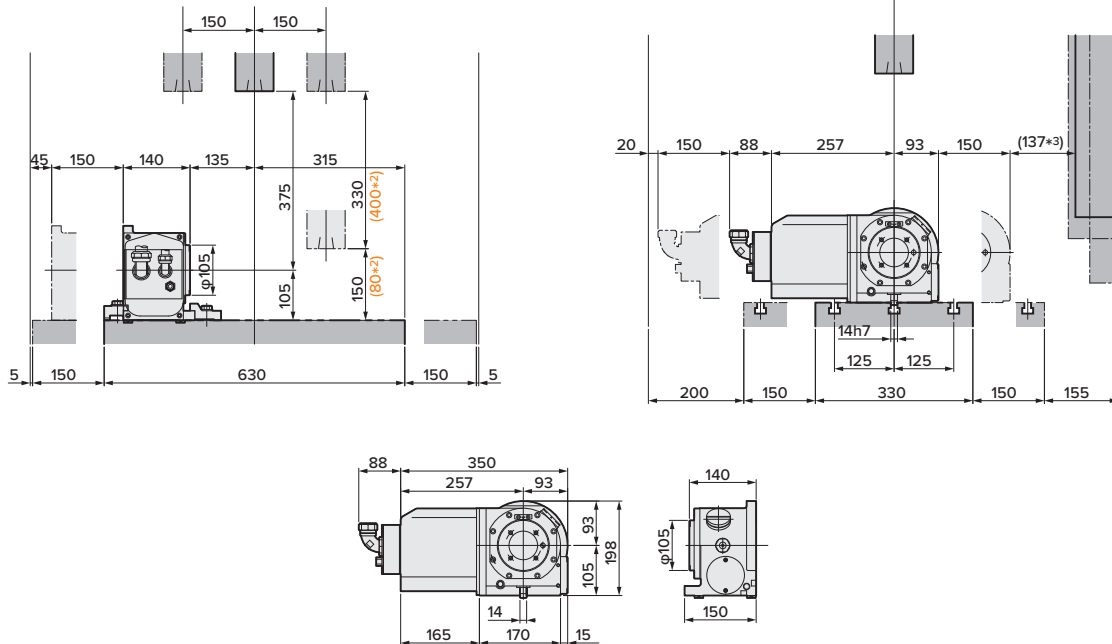


COMPACT CNC ROTARY TABLE

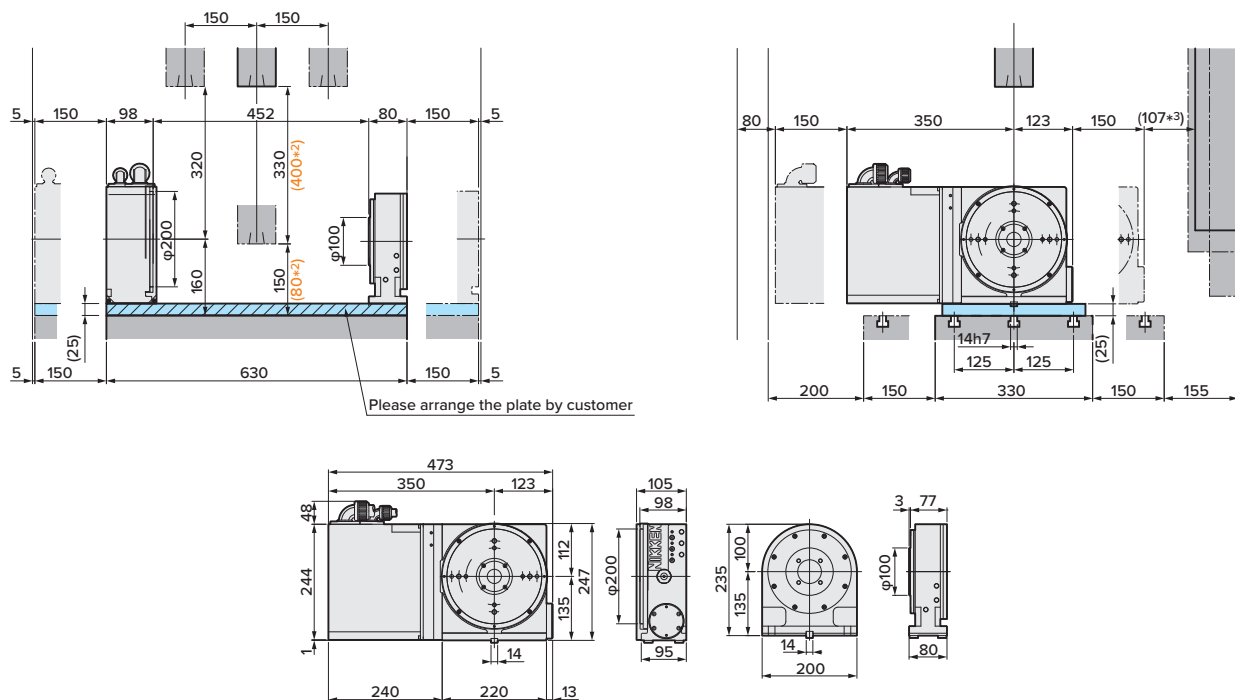
Diameter of Table:	$\phi 105\text{mm}$
MAX. Work Load:	30kg
MAX. Rotation Speed:	33.3 (r/min), 66.6 (r/min) *1
Indexing Accuracy:	$\pm 30\text{sec.}$
Brake Torque:	205Nm
Net Weight:	30kg
Servo Motor:	α 2iS/5000 or α 2iF/5000
Spindle Hole:	$\phi 60\text{mm}_{H7} \times \phi 30\text{mm}$ Through Hole

*1: High speed Z series

Please contact Lyndex-Nikken to confirm
FANUC / Nikken Rotary Table working envelope.
Drawings are subject to change.



(*2) The figures with orange color are the figures for (α -DSiB5_{Adv} Plus Series) (*3) Depends on the model.

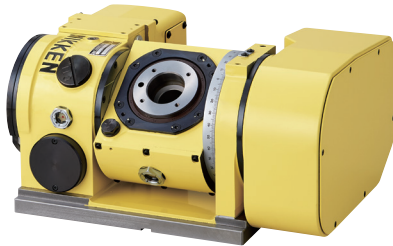


(*2) The figures with orange color are the figures for (α -DSiB5_{Adv} Plus Series) (*3) Depends on the model.

5AX TILTING ROTARY TABLE FOR ROBODRILL α -DSiB5 PLUS

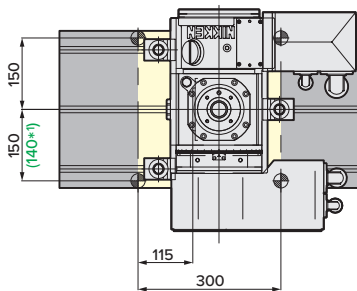


5AX-100FA



Compact 5AX TILTING ROTARY TABLE

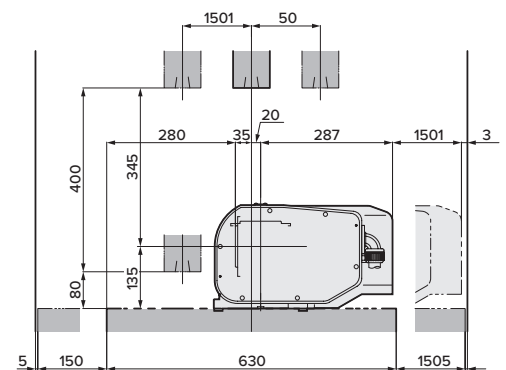
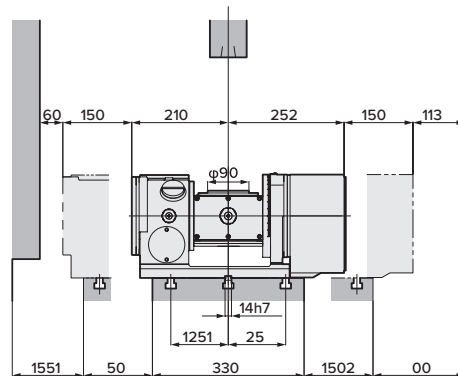
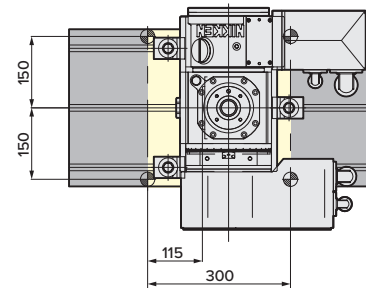
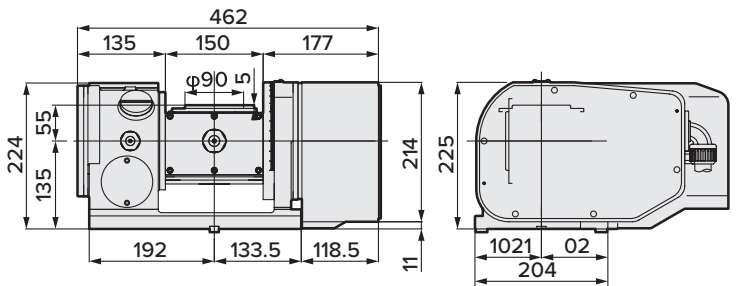
Diameter of Table:	$\phi 90\text{mm}$
MAX. Work Load:	20kg (Vertical) 40kg (Horizontal)
MAX. Rotation Speed:	44.4 (r/min) (Rotary), 22.2 (r/min) (Tilting)
Indexing Accuracy:	$\pm 30\text{sec.}$ (Rotary), 60sec. (Tilting)
Brake Torque:	205Nm (Rotary), 600Nm (Tilting)
Net Weight:	84kg
Servo Motor:	α iF1/5000 (Rotary) α iF1/5000 (Tilting)
Spindle Hole:	$\phi 50\text{mmH7} \times \phi 30\text{mm}$ Through Hole
Tilting Angle:	$0^\circ - 105^\circ$



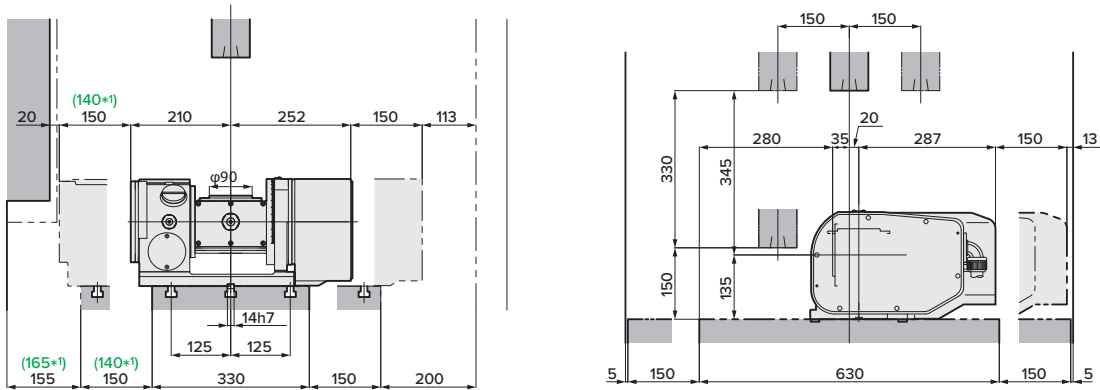
5AX TILTING ROTARY TABLE FOR ROBODRILL α -DSiB5_{ADV} PLUS



5AX-100FA



Please contact Lyndex-Nikken to confirm
FANUC / Nikken Rotary Table working envelope.
Drawings are subject to change.



(*1) The figures with green color are the figures for metal cover.

THE AREA OF NONINTERFERENCE IN TILTING POSITION

Angle	0° ~ 45°	0° ~ 90°	0° ~ 105°
5AX-100FA			

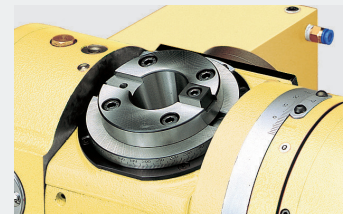
Extensive Lineup of Attachments



Jig Plate

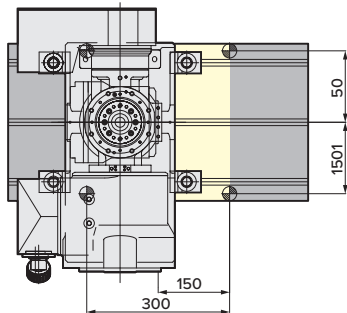
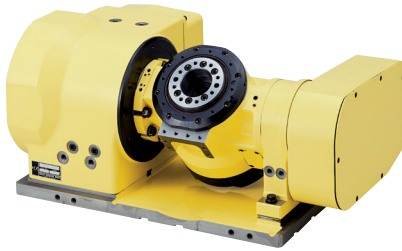


Scroll Chuck



Center Socket

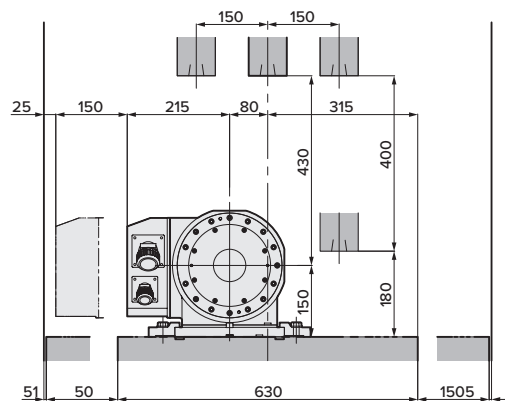
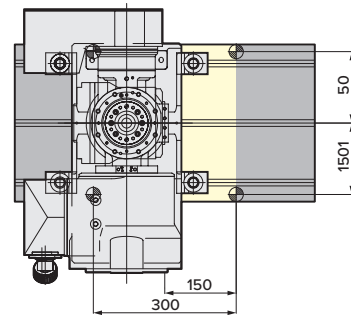
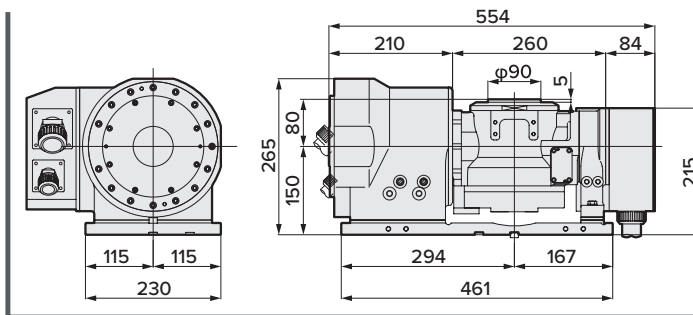
5AX-DD100AF



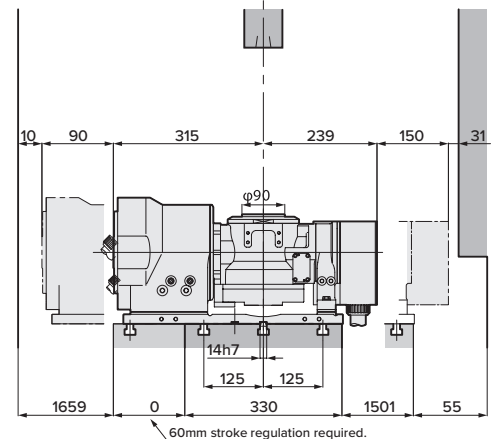
Compact 5AX TILTING ROTARY TABLE with DD

Diameter of Table:	$\phi 90\text{mm}$
MAX. Work Load:	10kg (Vertical) 20kg (Horizontal)
MAX. Rotation Speed:	200r/min (Rotary), 200r/min (Tilting)
Indexing Accuracy:	$\pm 10\text{sec.}$ (Rotary), $\pm 15\text{sec.}$ (Tilting)
Brake Torque:	75Nm (Rotary), 205Nm (Tilting)
Net Weight:	120kg
Servo Motor:	DiS15 / 1000 (Rotary) DiS60 / 400 (Tilting)
Spindle Hole:	$\phi 50\text{mmH7} \times \phi 20\text{mm}$ Through Hole
Tilting Angle:	$0^\circ - 110^\circ$

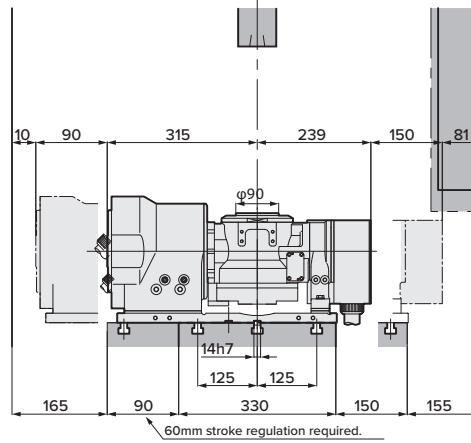
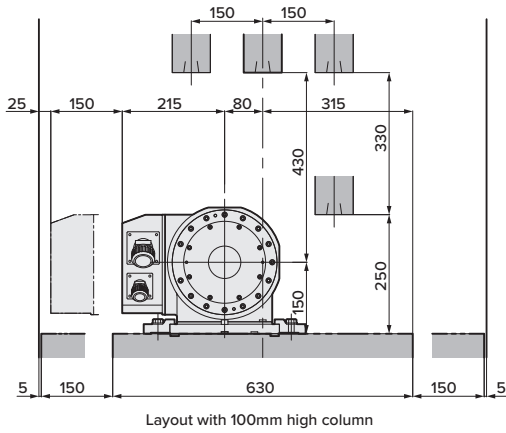
5AX-DD100AF



Layout with 100mm high column



Please contact Lyndex-Nikken to confirm FANUC / Nikken Rotary Table working envelope. Drawings are subject to change.



The Area of Noninterference in Tilting Position

Angle	5AX-DD100AF
0° ∩ 45°	<p>Φ200</p>
0° ∩ 90°	<p>Φ200</p>
0° ∩ 110°	<p>Φ200 20°</p>

Opens up New Possibilities for Machining with Compact M/C

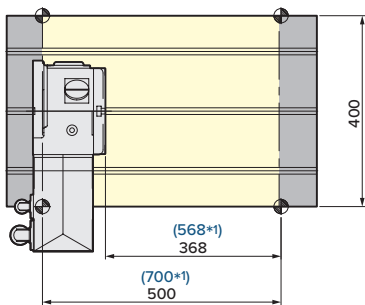
Suitable for many applications, from IT parts to automotive parts

High-precision 5-axis machining of precision electronic devices such as smartphones, automobile parts, etc. can be accomplished using a compact machining center.



Impeller

CNC180LFA

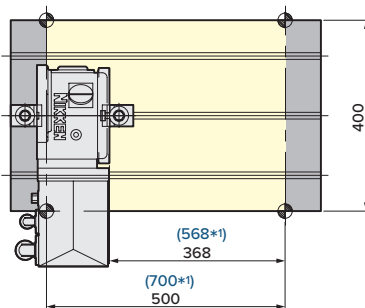
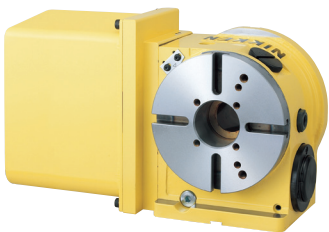


CNC ROTARY TABLE

Diameter of Table:	ϕ 180mm
MAX. Work Load:	100kg (Vertical) 200kg (Horizontal)
MAX. Rotation Speed:	33.3 (r/min), 66.6 (r/min) *1
Indexing Accuracy:	\pm 20sec.
Brake Torque:	303Nm
Net Weight:	45kg
Servo Motor:	α iF2/5000
Spindle Hole:	ϕ 60mm _{H7} X ϕ 40mm Through Hole

*1: High speed Z series

CNC202LFA

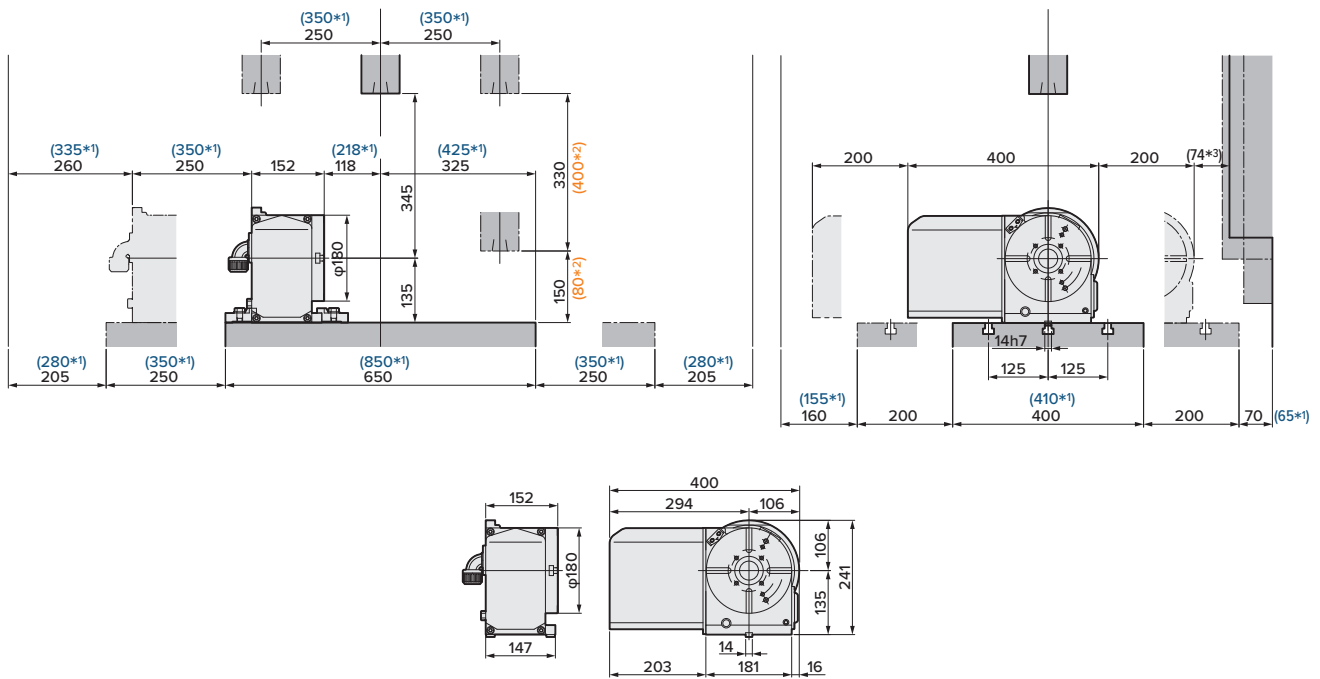


CNC ROTARY TABLE

Diameter of Table:	ϕ 200mm
MAX. Work Load:	100kg (Vertical) 200kg (Horizontal)
MAX. Rotation Speed:	33.3 (r/min), 66.6 (r/min) *1
Indexing Accuracy:	\pm 20sec.
Brake Torque:	303Nm
Net Weight:	55kg
Servo Motor:	α iF4/5000
Spindle Hole:	ϕ 60mm _{H7} X ϕ 40mm Through Hole

*1: High speed Z series

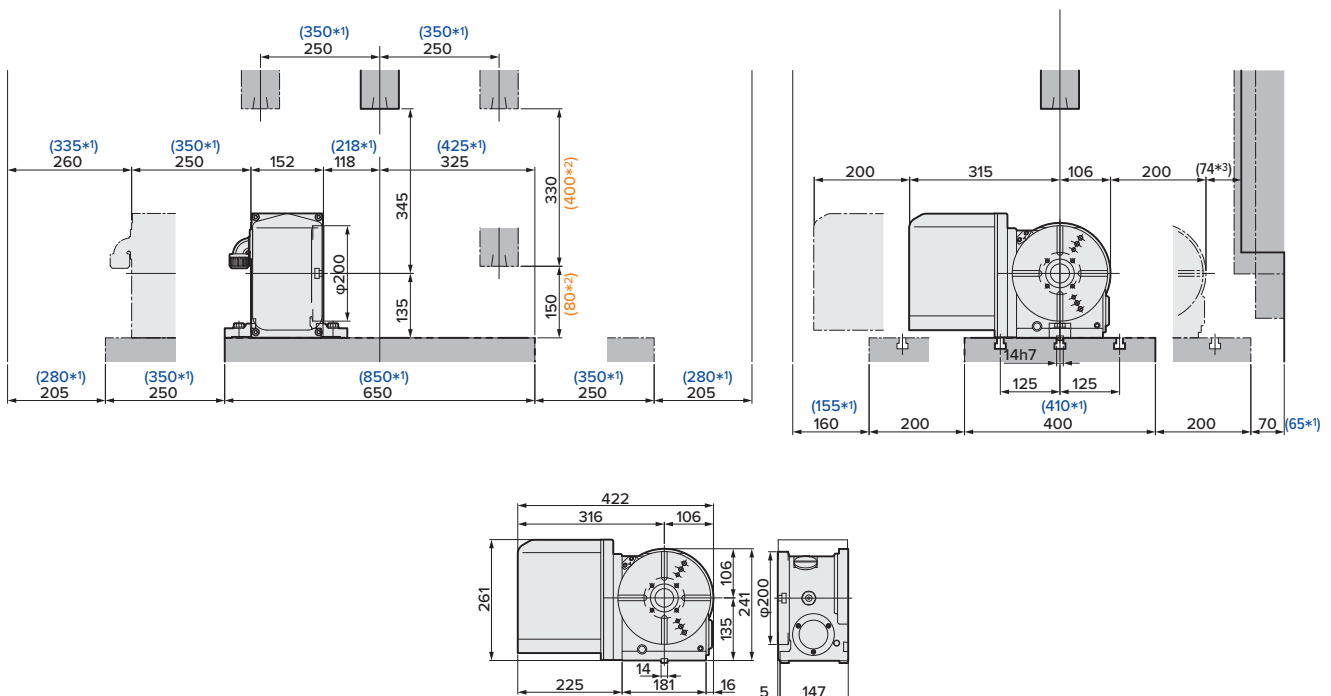
Please contact Lyndex-Nikken to confirm
FANUC / Nikken Rotary Table working envelope.
Drawings are subject to change.



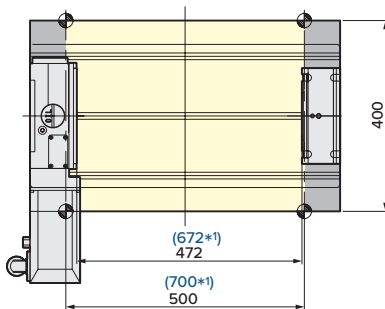
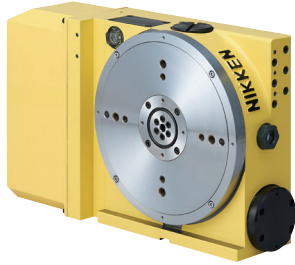
(*1) The figures with blue color are the figures for (α -DLiB5 Plus)

(*2) The figures with orange color are the figures for (α -DSiB5Adv Plus Series)

(*3) Depends on the model.



CNC205LFA (TAS-100N)

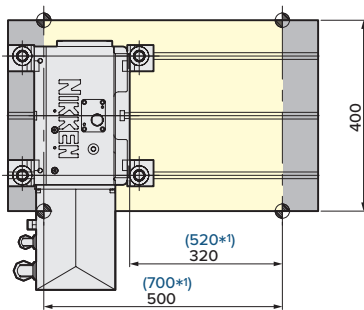
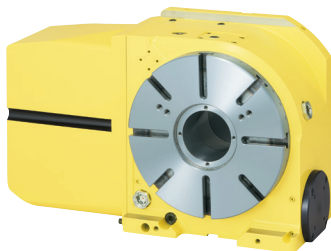


COMPACT CNC ROTARY TABLE

Diameter of Table:	ϕ 200mm
MAX. Work Load:	100kg with support
MAX. Rotation Speed:	33.3 (r/min), 66.6 (r/min) *1
Indexing Accuracy:	\pm 20 Arc Seconds
Brake Torque:	380Nm
Net Weight:	45kg
Servo Motor:	α 2iF/5000
Spindle Hole:	ϕ 60mm _{H7} X ϕ 30mm Through Hole

*1: High speed Z series

CNC260PLFA



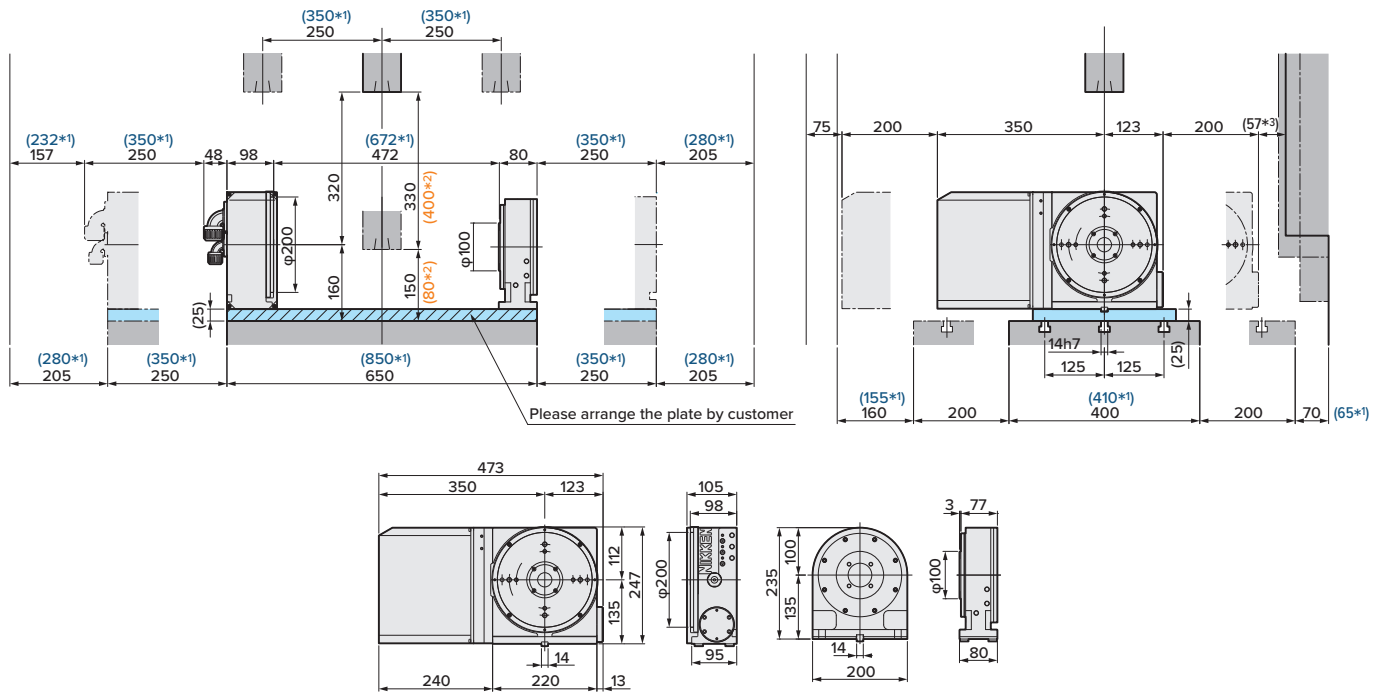
NEW

CNC ROTARY TABLE

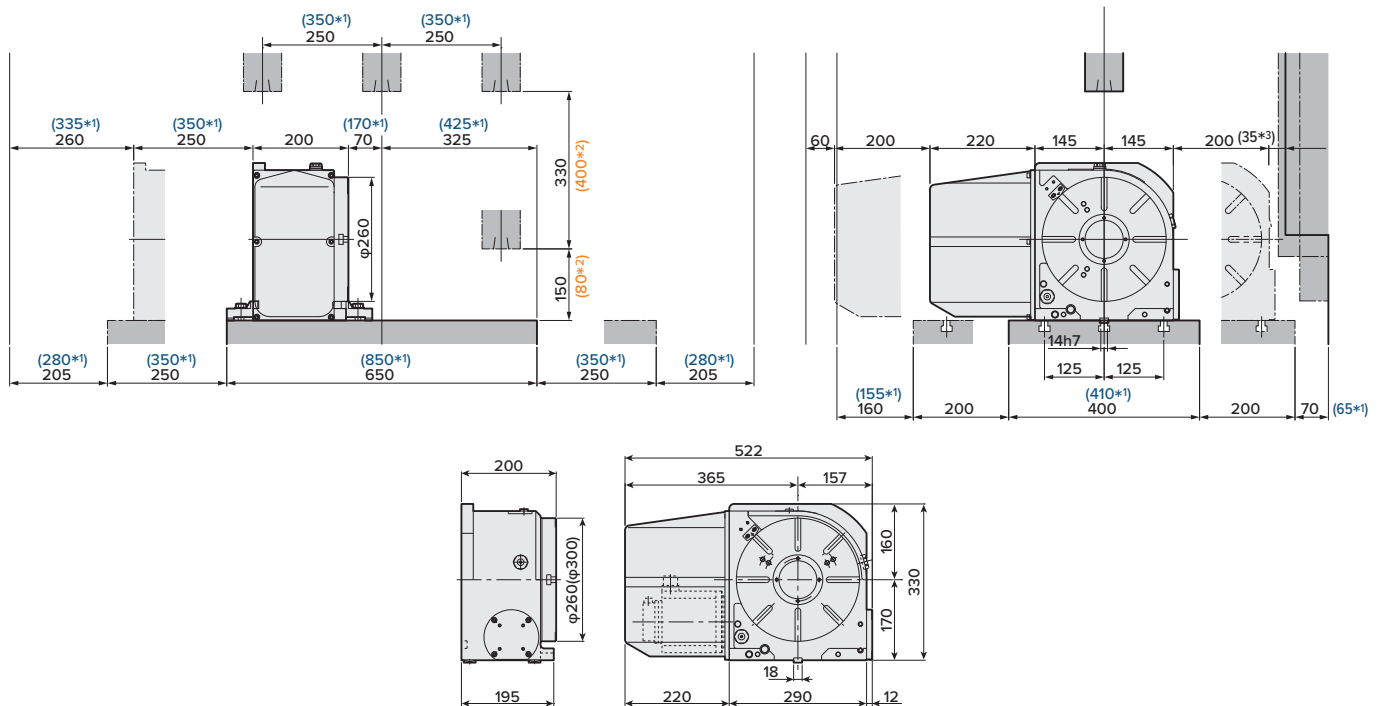
Diameter of Table:	ϕ 260mm
MAX. Work Load:	175kg (Vertical) 350kg (Horizontal)
MAX. Rotation Speed:	25 (r/min), 50 (r/min) *1
Indexing Accuracy:	20sec.
Brake Torque:	1430Nm (Pneumatic)
Net Weight:	115kg
Servo Motor:	α iF4/5000
Spindle Hole:	ϕ 80mm _{H7} Through Hole

*1: High speed Z series

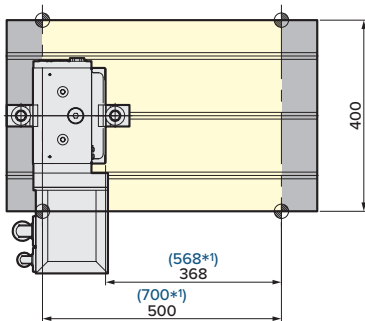
Please contact Lyndex-Nikken to confirm
FANUC / Nikken Rotary Table working envelope.
Drawings are subject to change.



- (*1) The figures with blue color are the figures for (α -DLiB5 Plus)
- (*2) The figures with orange color are the figures for (α -DSiB5Adv Plus Series) (*3) Depends on the model.



NCT200LFA



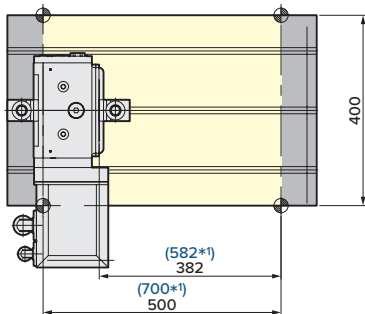
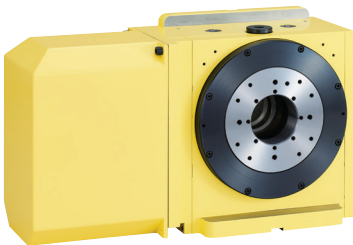
NCT ROTARY TABLE

Diameter of Table:	ϕ 200mm
MAX. Work Load:	100kg (Vertical) 200kg (Horizontal)
MAX. Rotation Speed:	33.3 (r/min), 66.6 (r/min) *1
Indexing Accuracy:	\pm 20sec.
Brake Torque:	900Nm
Net Weight:	65kg
Servo Motor:	α iF4/5000
Spindle Hole:	ϕ 60mm _{H7} X ϕ 40mm Through Hole

* 1: High speed Z series
Optional T-slotted face plate available

NCT200ELFA

(Without ϕ 200 faceplate)

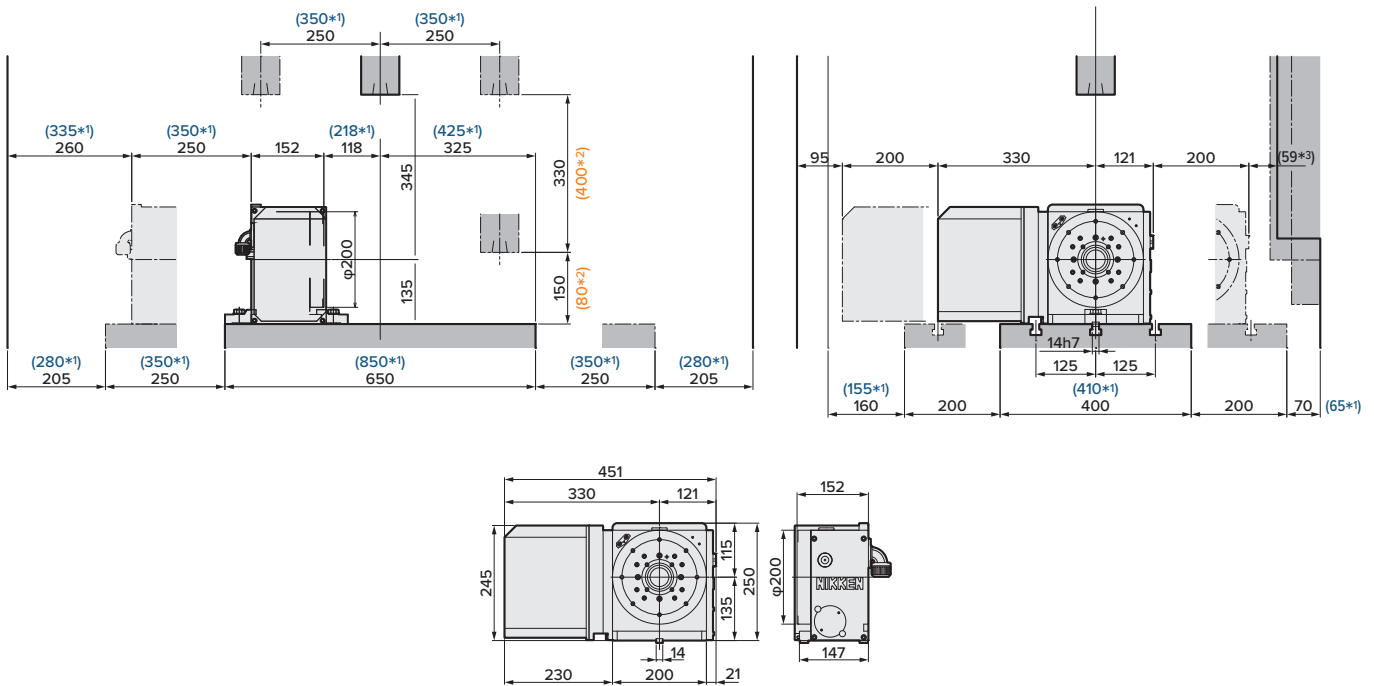


NCT ROTARY TABLE

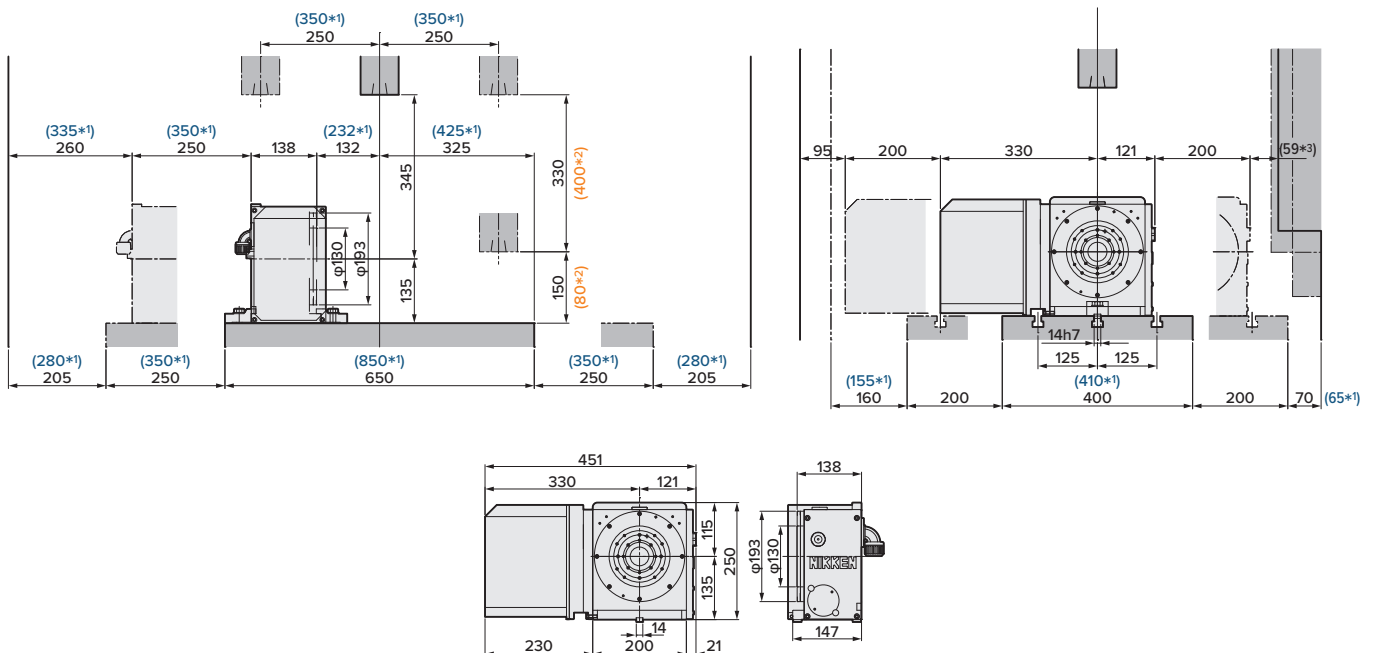
Diameter of Table:	ϕ 130mm
MAX. Work Load:	100kg (Vertical) 200kg (Horizontal)
MAX. Rotation Speed:	33.3 (r/min), 66.6 (r/min) *1
Indexing Accuracy:	\pm 20sec.
Brake Torque:	900Nm
Net Weight:	62kg
Servo Motor:	α iF4/5000
Spindle Hole:	ϕ 60mm _{H7} X ϕ 40mm Through Hole

* 1: High speed Z series

Please contact Lyndex-Nikken to confirm
FANUC / Nikken Rotary Table working envelope.
Drawings are subject to change.



- (*1) The figures with blue color are the figures for (α -DLiB5 Plus)
- (*2) The figures with orange color are the figures for (α -DSiB5Adv Plus Series)
- (*3) Depends on the model.

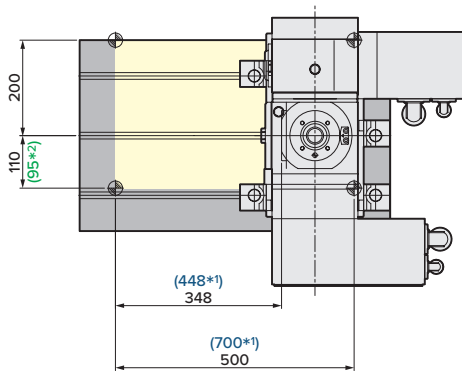
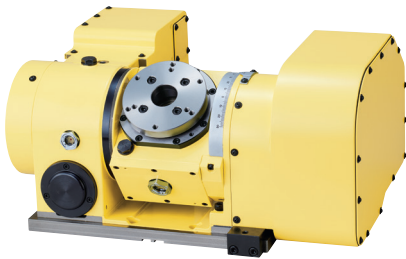


- (*1) The figures with blue color are the figures for (α -DLiB5 Plus)
- (*2) The figures with orange color are the figures for (α -DSiB5Adv Plus Series)
- (*3) Depends on the model.

5AX TILTING ROTARY TABLE FOR ROBODRILL α -DMiB5 PLUS



5AX-130FA



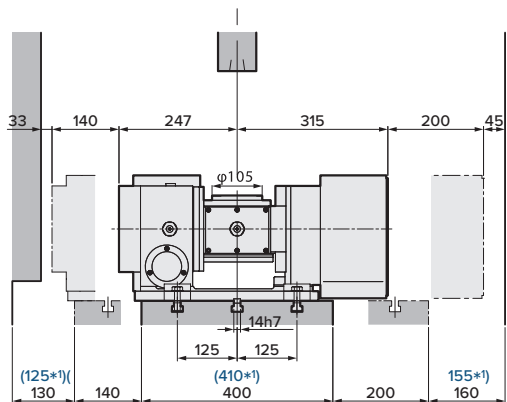
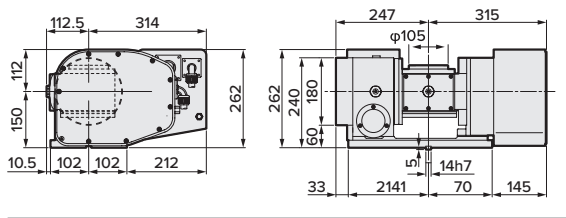
5AX TILTING ROTARY TABLE

Diameter of Table:	ϕ 105mm (With ϕ 130mm sub table)
MAX. Work Load:	25kg (Vertical) 50kg (Horizontal)
MAX. Rotation Speed:	33.3 (r/min) (Rotary), 11.1 (r/min) (Tilting)
Indexing Accuracy:	\pm 30sec. (Rotary), 60sec. (Tilting)
Brake Torque:	205Nm (Rotary), 303Nm (Tilting)
Net Weight:	115kg
Servo Motor:	α iF2/5000 (Rotary) α iF2/5000 (Tilting)
Spindle Hole:	ϕ 50mm _{H7} X ϕ 30mm Through Hole
Tilting Angle:	0°-105°

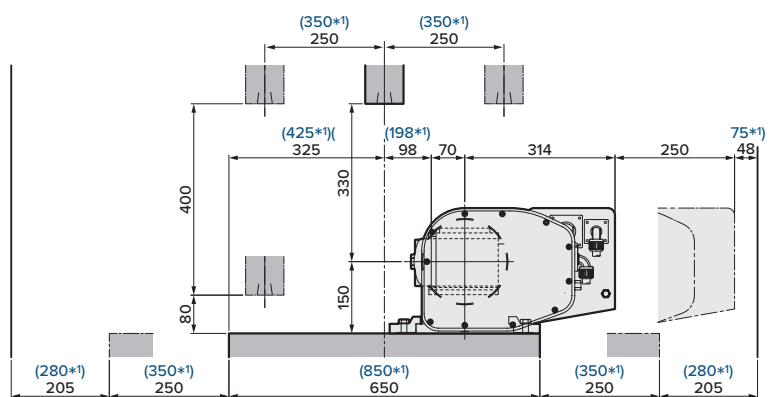
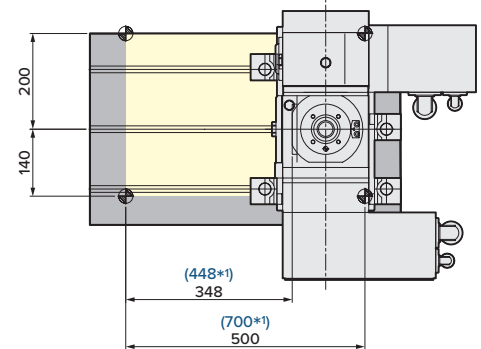
5AX TILTING ROTARY TABLE FOR ROBODRILL α -DMiB5_{ADV} PLUS



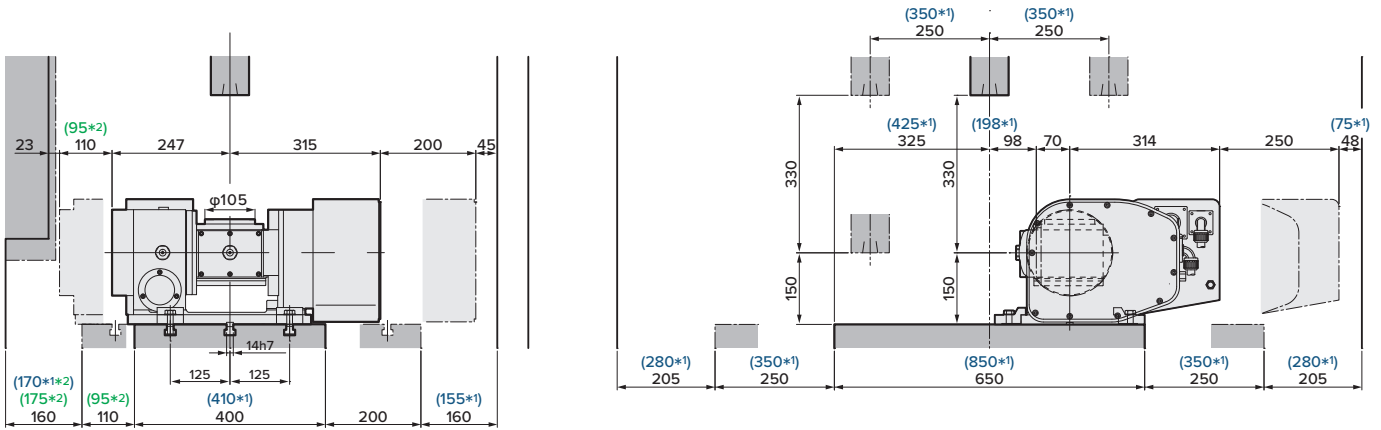
5AX-130FA



Please contact Lyndex-Nikken to confirm
FANUC / Nikken Rotary Table working envelope.
Drawings are subject to change.



(*1) The figures with blue color are the figures for (α -DLiB5 Plus)



- (*1) The figures with blue color are the figures for (α -DLiB5 Plus)
- (*2) The figures with green color are the figures for metal cover.

Nikken CNC Rotary Tables work in many applications throughout the world.

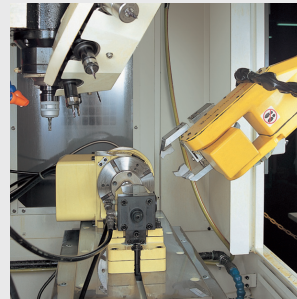
Please feel free to contact us.



5AX-130 & Robot



CNC202 & Robot



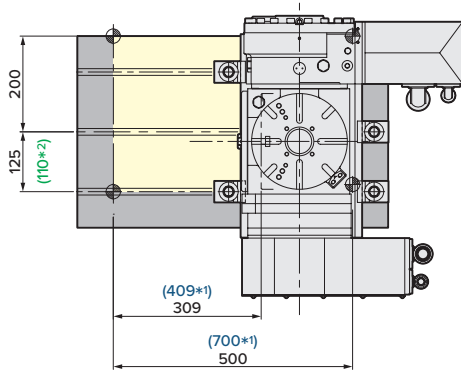
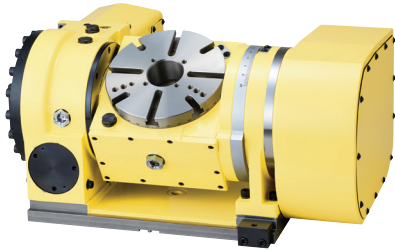
The Area of Noninterference in Tilting Position

Angle	5AX-130FA
0° ∩ 45°	
0° ∩ 90°	
0° ∩ 105°	

5AX TILTING ROTARY TABLE FOR ROBODRILL α -DMiB5 PLUS



5AX-201FA



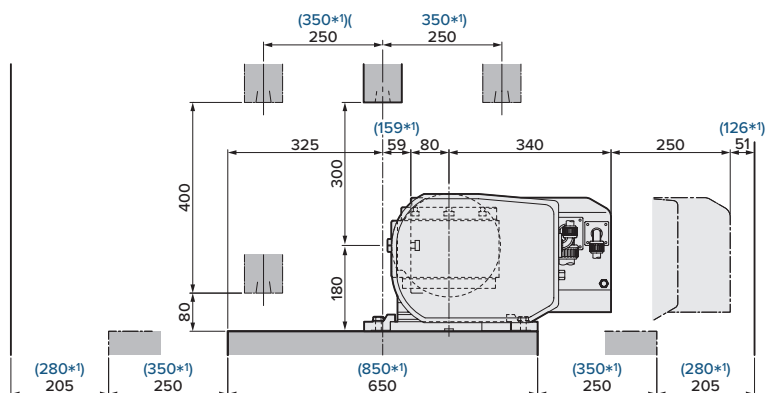
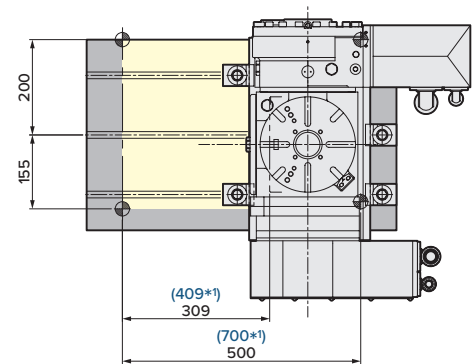
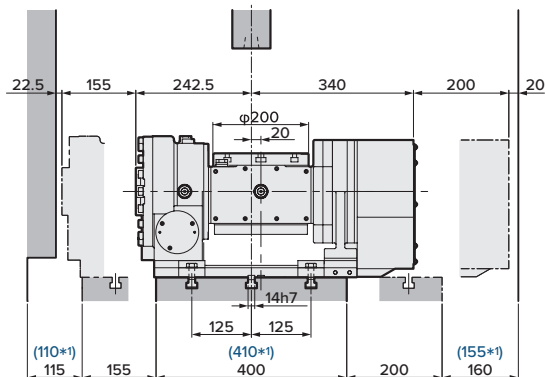
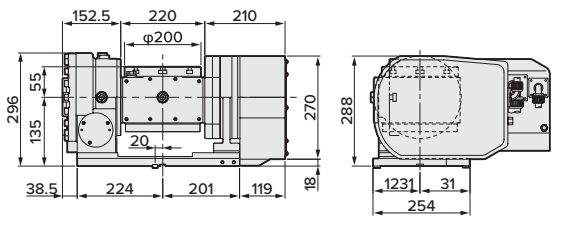
5AX TILTING ROTARY TABLE

Diameter of Table:	ϕ 200mm
MAX. Work Load:	40kg (Vertical) 60kg (Horizontal)
MAX. Rotation Speed:	33.3 (r/min) (Rotary), 16.6 (r/min) (Tilting)
Indexing Accuracy:	\pm 15sec. (Rotary), 60sec. (Tilting)
Brake Torque:	303Nm/588Nm Air/Hyd (Rotary), 303Nm/612Nm Air/Hyd (Tilting)
Net Weight:	160kg
Servo Motor:	α iF2/5000 (Rotary) α iS4/5000 (Tilting)
Spindle Hole:	ϕ 60mm _{H7} X ϕ 50mm Through Hole
Tilting Angle:	0°-105°

5AX TILTING ROTARY TABLE FOR ROBODRILL α -DMiB5_{ADV} PLUS

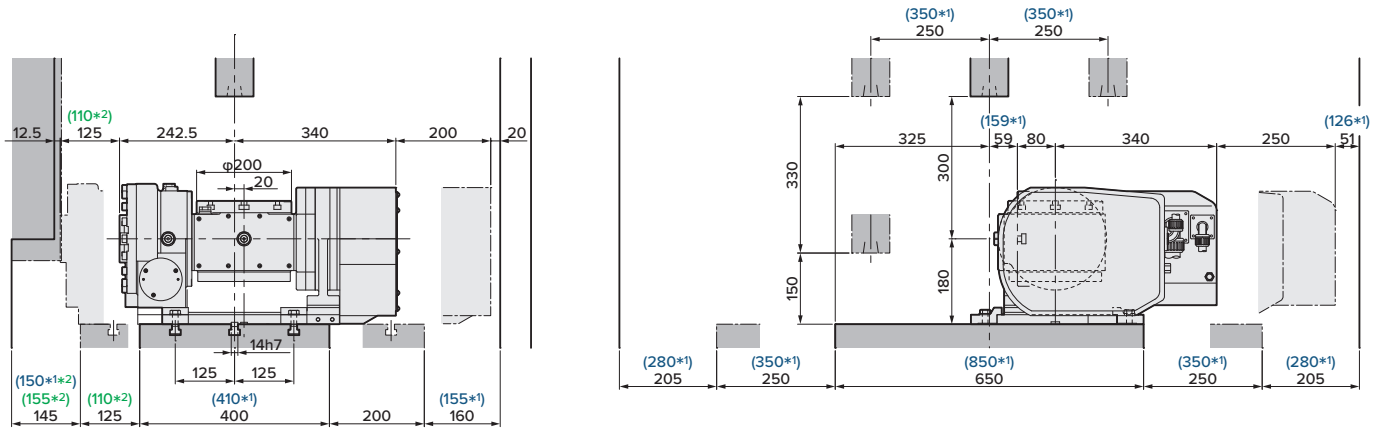


5AX-201FA



Please contact Lyndex-Nikken to confirm
FANUC / Nikken Rotary Table working envelope.
Drawings are subject to change.

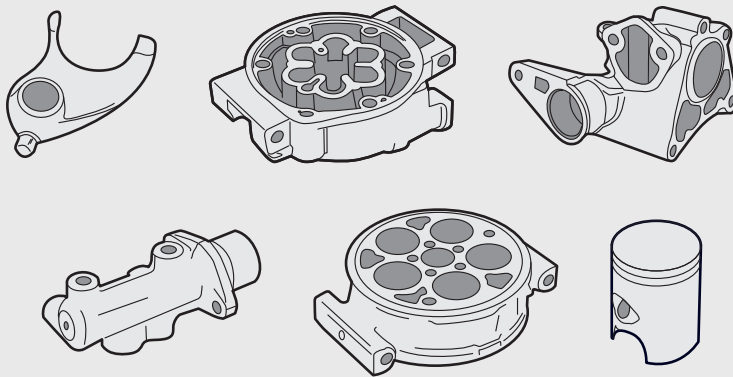
(*1) The figures with blue color are the figures for (α -DLiB5_{ADV} Plus)



(*1) The figures with blue color are the figures for (α-DLiB5 Plus)

(*2) The figures with green color are the figures for metal cover.

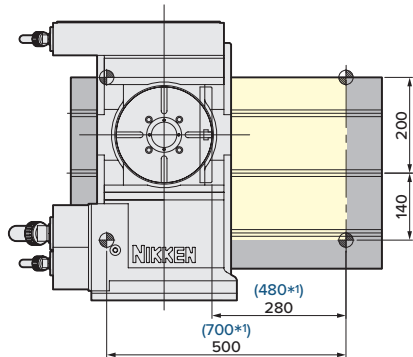
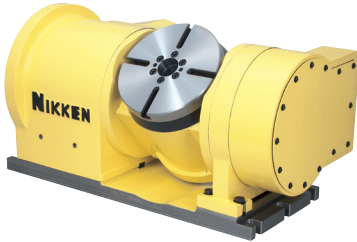
Components of Automotive Parts



The Area of Noninterference in Tilting Position

Angle	5AX-201FA
0° ∩ 45°	
0° ∩ 90°	
0° ∩ 105°	

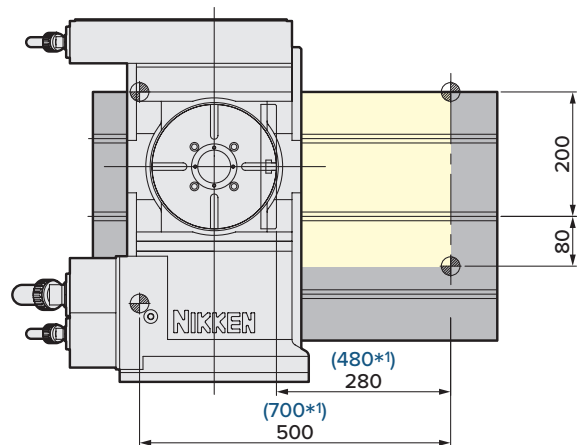
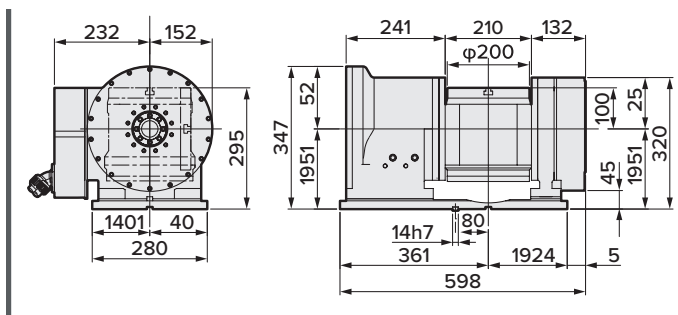
5AX-DD200AF2



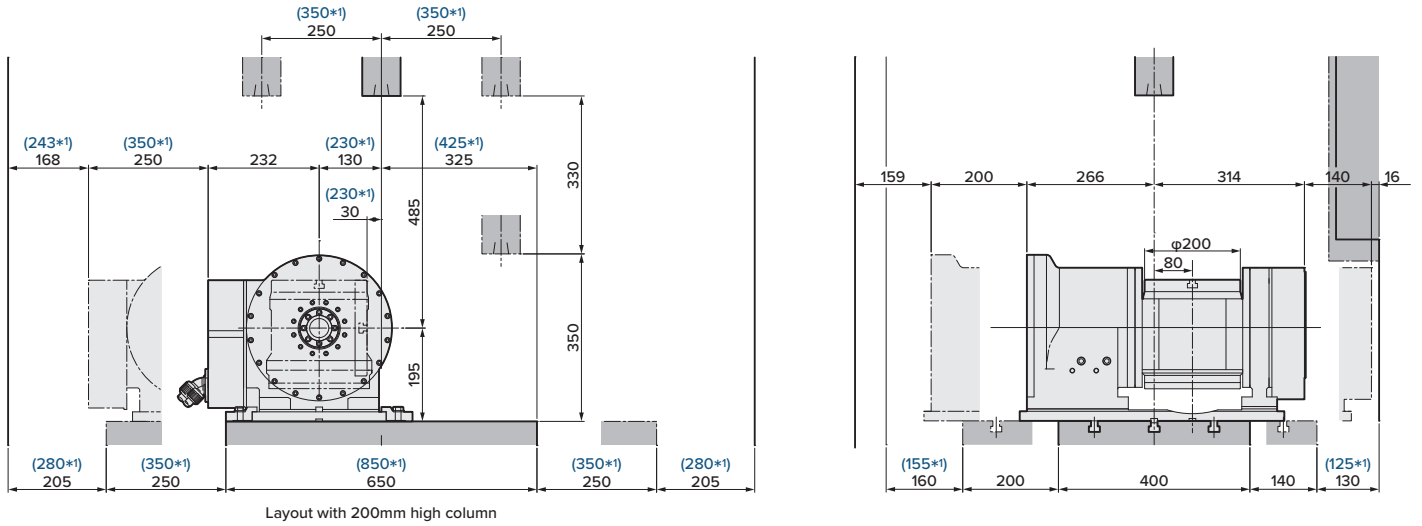
5AX TILTING ROTARY TABLE with DD MOTOR

Diameter of Table:	$\phi 200\text{mm}$
MAX. Work Load:	15kg (Vertical) 30kg (Horizontal)
MAX. Rotation Speed:	200 r/min (Rotary), 150 r/min (Tilting)
Indexing Accuracy:	$\pm 10\text{sec.}$ (Rotary), $\pm 15\text{sec.}$ (Tilting)
Brake Torque:	150Nm (Rotary), 500Nm (Tilting)
Net Weight:	190kg
Servo Motor:	DiS60 / 400 (Rotary) DiS150 / 300 (Tilting)
Spindle Hole:	$\phi 53\text{mmH7} \times \phi 40\text{mm}$ Through Hole
Tilting Angle:	$0^\circ - 110^\circ$
Tilting Range:	$\pm 110^\circ$

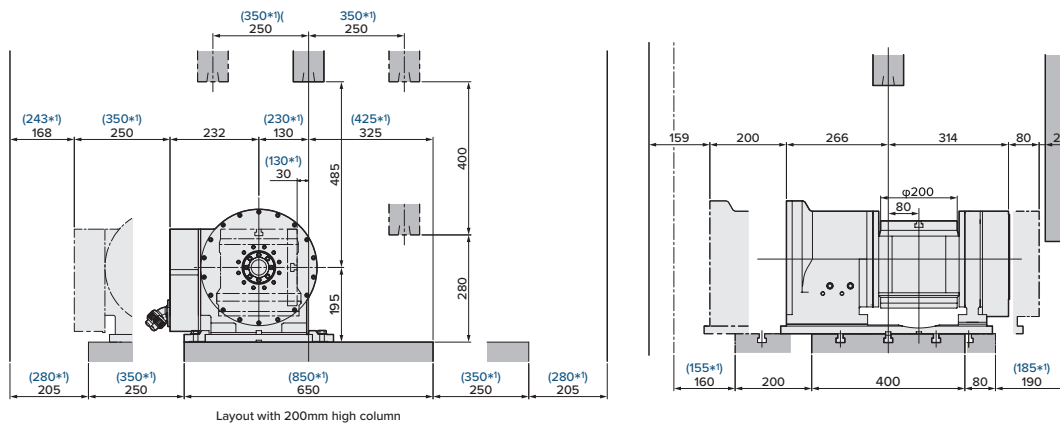
5AX-DD200AF2



Please contact Lyndex-Nikken to confirm
FANUC / Nikken Rotary Table working envelope.
Drawings are subject to change.



(*1) The figures with blue color are the figures for (α -DLiB5 Plus)

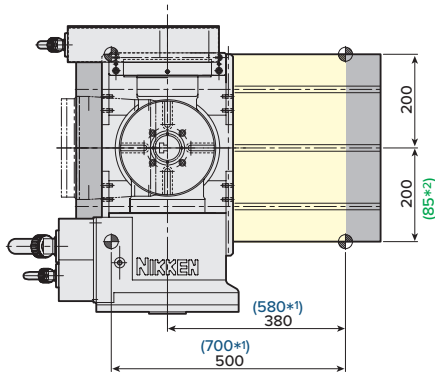
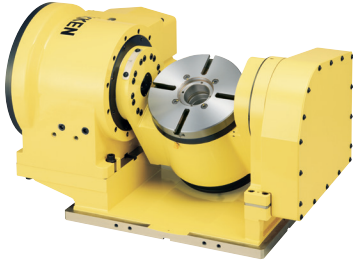


The Area of Noninterference in Tilting Position

Angle	5AX-DD200AF2
-45° ∩ 45°	
-90° ∩ 90°	
-110° ∩ 110°	

(*1) The figures with blue color are the figures for (α -DLiB5Adv Plus)

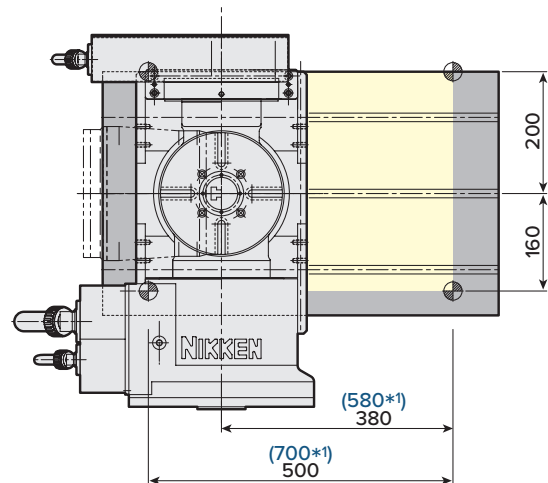
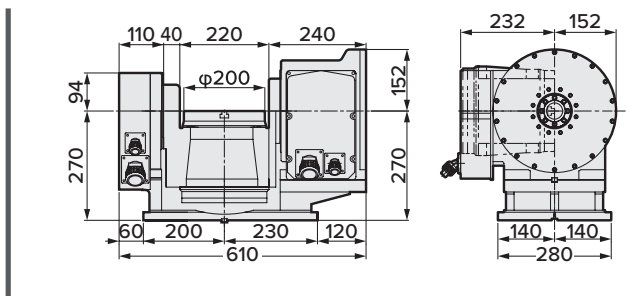
5AX-DD201BF3



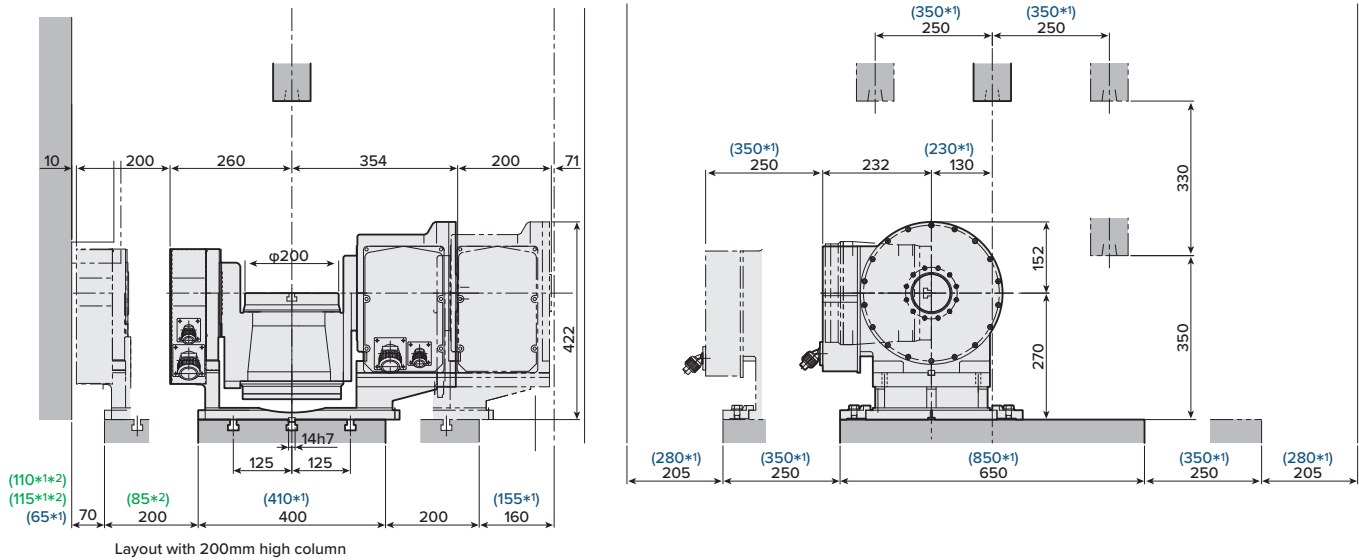
5AX TILTING ROTARY TABLE with DD MOTOR

Diameter of Table:	ϕ 200mm
MAX. Work Load:	30kg
MAX. Rotation Speed:	200 r/min (Rotary), 150 r/min (Tilting)
Indexing Accuracy:	\pm 10sec. (Rotary), \pm 15sec. (Tilting)
Brake Torque:	150Nm (Rotary), 500Nm (Tilting)
Net Weight:	205kg
Servo Motor:	DiS60 / 600 (Rotary) DiS180 / 800 (Tilting)
Spindle Hole:	ϕ 53mmH7 X ϕ 40mm Through Hole
Tilting Angle:	0°-110°
Tilting Range:	\pm 110°

5AX-DD201BF3

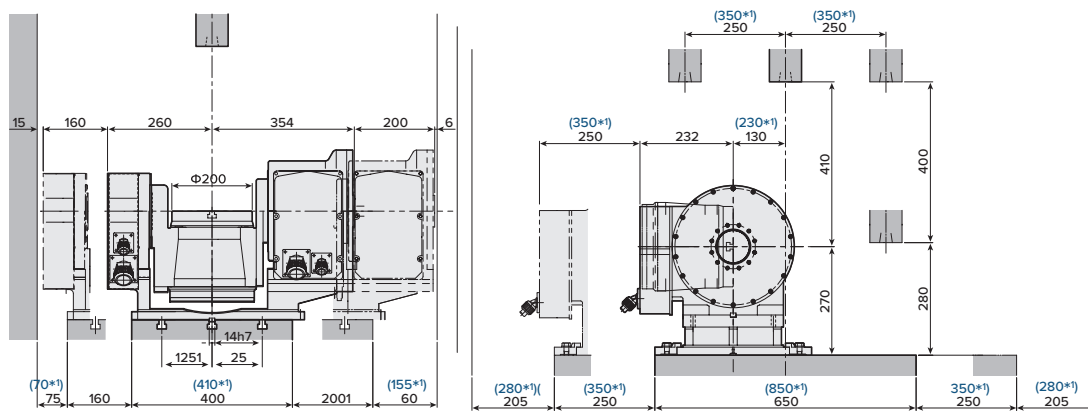


Please contact Lyndex-Nikken to confirm
FANUC / Nikken Rotary Table working envelope.
Drawings are subject to change.



(*1) The figures with blue color are the figures for (α -DLiB5 Plus)

(*2) The figures with green color are the figures for metal cover.



The Area of Noninterference in Tilting Position

Angle	5AX-DD201BF3
-45° ∩ 45°	
-90° ∩ 90°	
-110° ∩ 110°	

(*1) The figures with blue color are the figures for (α -DLiB5Adv Plus)

RELATION BETWEEN UNBALANCING LOAD AND SERVO MOTOR

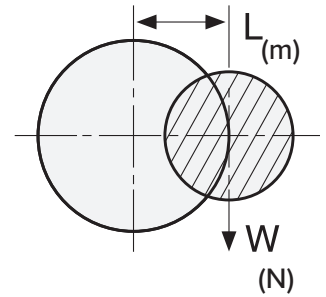


This table shows the guide line. Please make the unbalancing load as small as possible and use the counter balance weight for the precision machining.

Excessive unbalancing load causes the indexing accuracy and the durability to be worse. The relation between the guide line of the unbalancing load and the servo motor shows below. Please do not apply the load exceeding the guide line.

CNCZ series table can not be recommended for the application with large unbalancing load. CNCZ series table is recommended for the application only with light load.

Please inform us the detail of the component, jig fixture, indexing time etc. prior to your order. Then, the calculation of the load is studied and the best suitable rotary table (including the suitable motor) for your application is proposed. The servo parameter is also tuned.



GUIDE LINE OF MAX. UNBALANCING LOAD FOR ADDITIONAL AXIS CONTROL

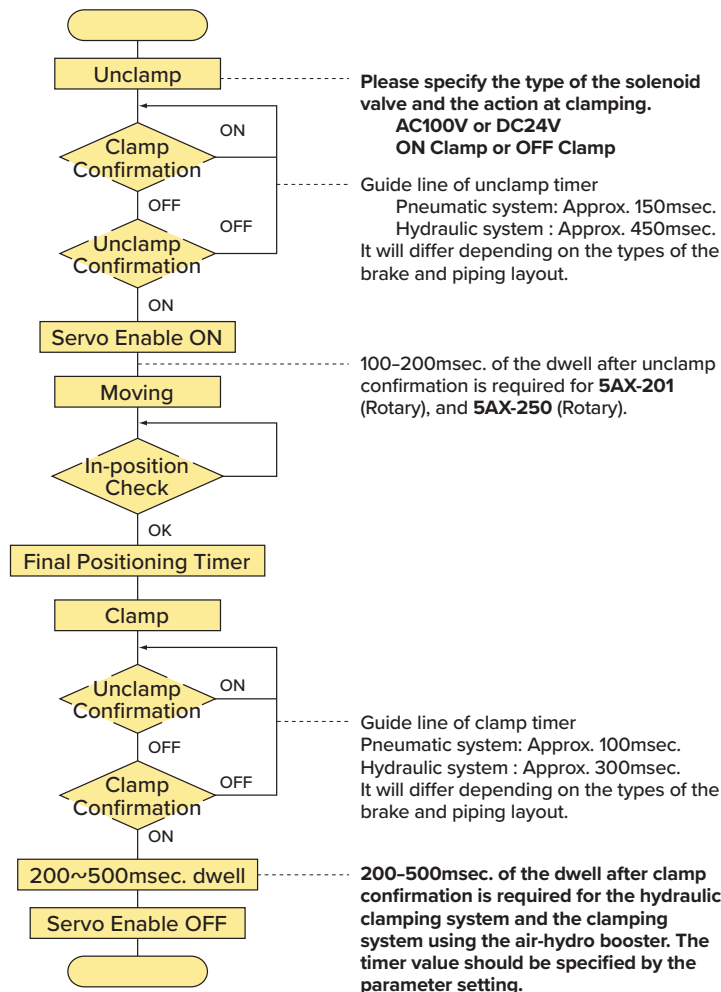
MAX. Unbalancing Load (Nm)	CNC180LFA	CNC202LFA	CNC205LFA	NCT200LFA	CNC260PLFA
30	αif2	αif2	αif2		
50	αif4	αif4			
60				αif4	αif4
100					αif8

FLOW CHART OF THE ADDITIONAL AXIS CONTROL



Servo enable is basically kept OFF during the mechanical brake clamps.

Flow Chart of the Additional Axis Control



⚠ Please specify the solenoid valve control method when ordering

Please specify the brake control when ordering

- CNC(5AX) ROTARY TABLE is DC24V, ON clamp.
- ROTARY TABLE with DD motor is DC24V, OFF clamp.

⚠ Positioning under unbalancing load

Please move the unbalancing load up to the destination position.

Positioning of the unbalancing up to the destination position is recommended.

Positioning of the unbalancing down to the destination position is not recommended.

NOTES ON THE USE OF DIRECT DRIVE TABLES



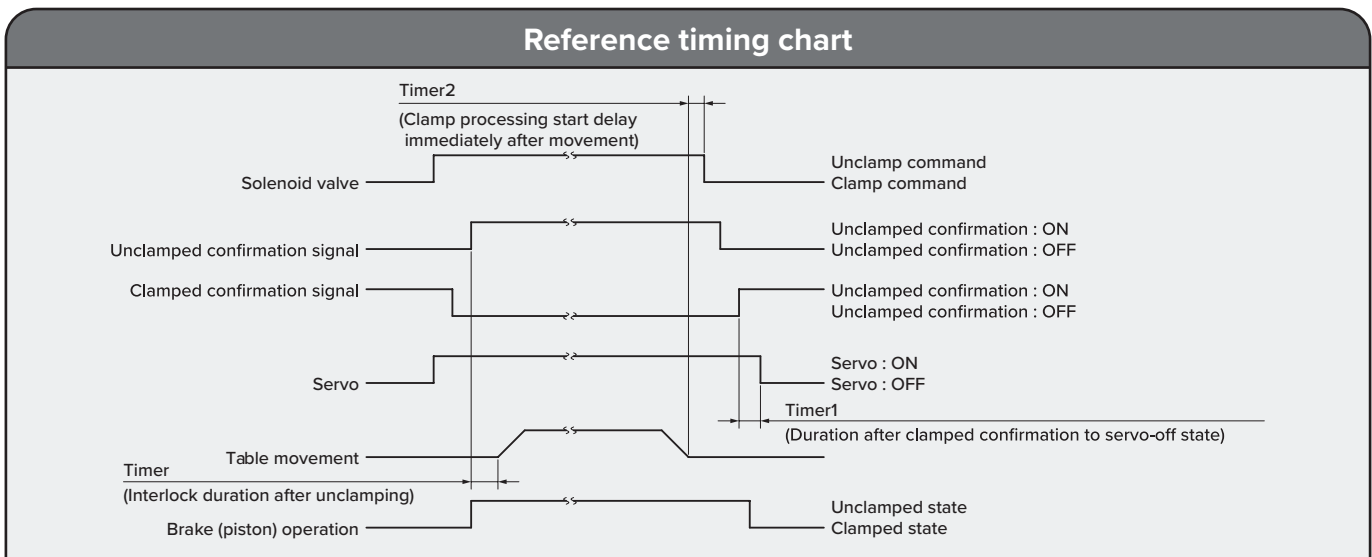
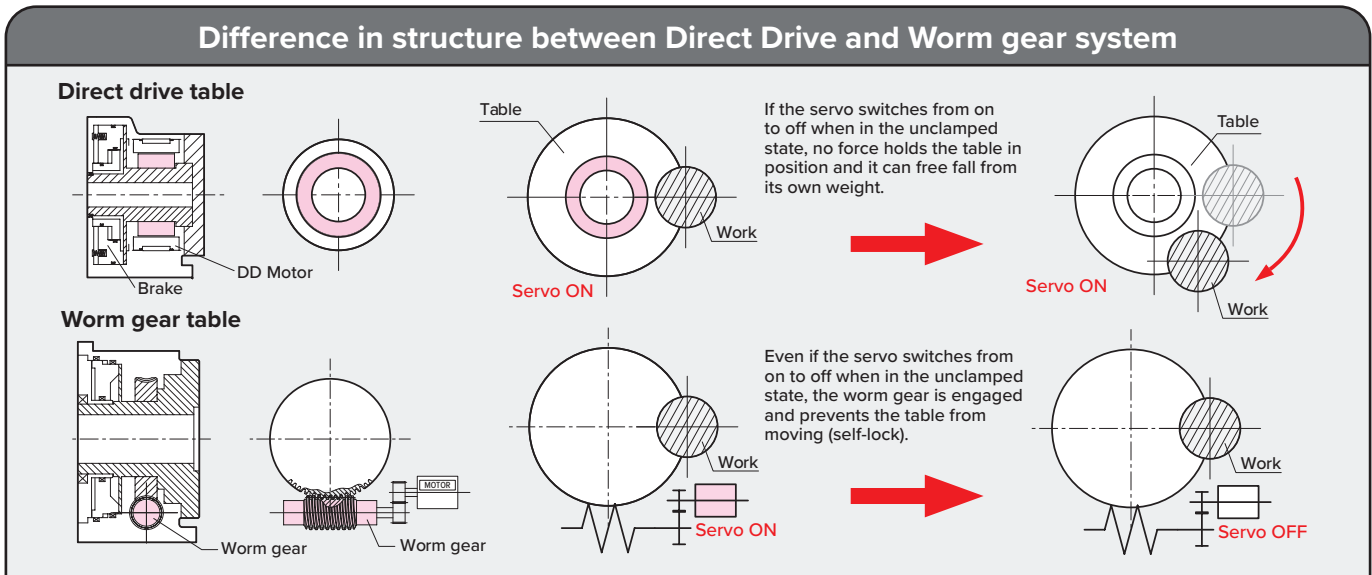
Direct Drive Table Characteristics

The spindle is linked directly to the motor for excellent responsiveness. As a trade-off for this responsiveness, the system is very sensitive to external force and loads, so it is necessary to set suitable parameters for each application.

Adjustment is necessary to perform 5-axis simultaneous machining (synchronized machining). The NIKKEN standard parameters can be used for indexing and positioning. After confirming that optional functions* for synchronized machining are available, it is necessary to make appropriate settings to satisfy the customer's machining time and machining precision requirements. For simultaneous operation, suitable settings must be made to align the 4th (5th) axis with the three basic axes (XYZ).

Clamping Operation

Due to the characteristics of the DD table it can be turned easily by hand if power is not being supplied (free run state). The table will again be in the free run state when the servo turns off after the brake is applied, unless appropriate settings are made, and this can cause positioning inaccuracy. Consult with the machine manufacturer to ensure that the timing is as shown in the timing chart below to prevent a free run state from occurring.



Preventing Emergencies (in case of power interruption)

Configure a pneumatic (hydraulic) circuit (off-clamp) that will provide an effective brake should an emergency stop occur. Unlike normal clamping operation, in an emergency stop the brake is applied at the same time that the servo turns off momentarily, and this can result in positioning inaccuracy on an axis carrying a large load, such as the weight axis. To prevent this, enable the brake control function (FANUC).

Brake Control Function

To prevent the fall of the weight axis when an alarm is generated or an emergency stop occurs, instead of stopping excitation of the motor immediately, excitation of the motor continues for the duration specified by a parameter to allow the mechanical brake to engage.

BT MILLING CHUCKS

FEATURES

- Nikken patented design
- Nut body contact, nose clamping and anti-vibration mechanism
- Thick body and internal slots provide extremely strong chucking torque and rigidity
- Quiet and stable heavy milling
- 140% more bearing surface than competitors' milling chucks



T.I.R.
<0.0002" at 3xD



Coolant-Thru
Thru-tool coolant

MILLING



REAMING



DRILLING



Please note that the maximum RPM listed in our catalog may vary depending on the toolholder shank, weight, balanceability and the G rating.

BT30

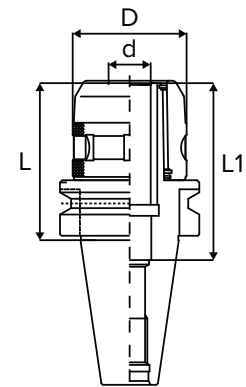
Part Number	Collet Series	Clamping Range	Wrench	d	L (mm)	L	L1	D	Max. RPM
BT30-C3/4-75*	KM3/4 or CCK3/4	0.125-0.750"	9HC22	0.75"	75	2.95"	3.15"	2.03"	12K

Note:

- Wrench not included.
- "*" indicates stubby style.



Available in **TAPER PLUS+**
Dual-taper and flange contact



BT HIGH-SPEED MILLING CHUCKS

BT30 HIGH SPEED

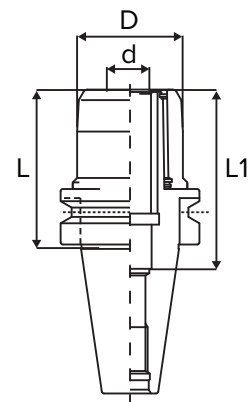
Part Number	Collet Series	Clamping Range	High-Speed Spanner Wrench	d	L (mm)	L	L1	D	Max. RPM
BT30-C3/4-75G	KM3/4 or CCK3/4	0.125-0.750"	GH20	0.75"	75	2.95"	3.15"	1.89"	30K

Note:

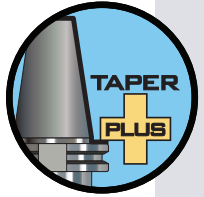
- High-speed spanner wrench not included
- High-speed BT30 Milling Chucks use special high-speed spanner wrenches.



Available in **TAPER PLUS+**
Dual-taper and flange contact

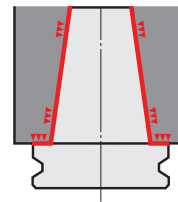


TAPER PLUS BT MILLING CHUCKS



Taper Plus Advantages

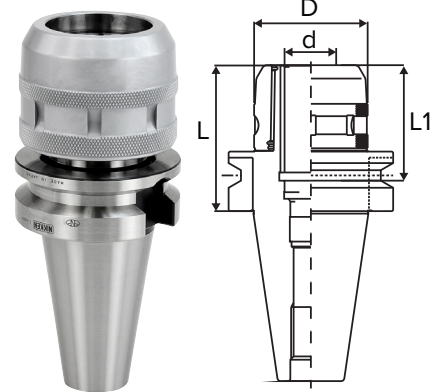
- Outstanding runout accuracy for longer tool life
- Vibration dampening for increased productivity
- High rigidity for smooth and stable cutting
- Interchangeable between standard and dual face contact spindles
- 53% more surface area contact than just the taper alone



TAPER PLUS - BT30

Part Number	Collet Series	Clamping Range	Wrench	d	L (mm)	L	L1	D	Max. RPM
NBT30-C3/4-70	KM3/4 or CCK3/4	0.125-0.750"	9HC22	0.75"	70	2.76"	3.15"	2.03"	12K
NBT30-C3/4-75	KM3/4 or CCK3/4	0.125-0.750"	9HC22	0.75"	75	2.95"	3.15"	2.03"	12K
NBT30-C1-75	KM1 or CCK1	0.125-1.000"	9HC25	1.00"	75	2.95"	2.68"	2.17"	8K

Note: "N" denotes Taper Plus dual face contact.

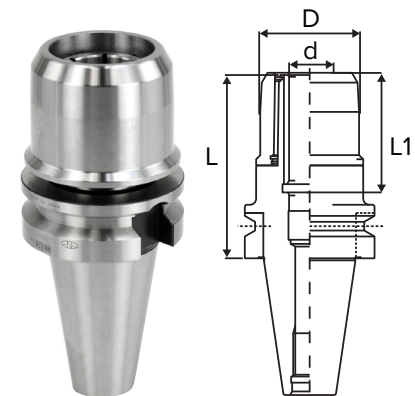


TAPER PLUS BT HIGH-SPEED MILLING CHUCKS

TAPER PLUS - BT30 HIGH SPEED

Part Number	Collet Series	Clamping Range	High-Speed Spanner Wrench	d	L (mm)	L	L1	D	Max. RPM
NBT30-C3/4-75G	KM3/4 or CCK3/4	0.125-0.750"	GH20	0.75"	75	2.95"	3.15"	1.89"	30K
NBT30-C1-75G	KM1 or CCK1	0.125-1.000"	GH25	1.00"	75	2.95"	2.68"	2.15"	25K

Note: "N" denotes Taper Plus dual face contact.

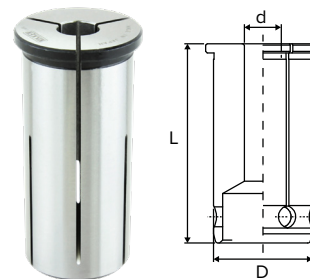


KM COLLETS

Milling chuck collets are designed to ensure uniform fit around the cutting tool shank. This provides maximum gripping power as well as concentric positioning of the cutting tool.

Collet Series	L	D	d = Collet Range
KM3/4	2.087"	0.750"	1/8" - 5/8"
KM1	2.323"	1.000"	1/8" - 7/8"
KM1.1/4	2.539"	1.250"	3/16" - 1"
KM32mm	2.539"	1.259"	3/16" - 1"
KM2	3.268"	2.000"	1" - 1.1/2"

Note: KM Collets only collapse .001". For optimal performance, please use on-size cutting tools.



Collet Series	Inch		Metric		
	Size	Part Number	Size	Part Number	
3/4"	1/8"	KM3/4-1/8	6mm	KM3/4-6	
	3/16"	KM3/4-3/16	7mm	KM3/4-7	
	1/4"	KM3/4-1/4	8mm	KM3/4-8	
	5/16"	KM3/4-5/16	10mm	KM3/4-10	
	3/8"	KM3/4-3/8	12mm	KM3/4-12	
	7/16"	KM3/4-7/16	14mm	KM3/4-14	
	1/2"	KM3/4-1/2	16mm	KM3/4-16	
	9/16"	KM3/4-9/16	-	-	
	5/8"	KM3/4-5/8	-	-	
1"	1/8"	KM1-1/8	6mm	KM1-6	
	3/16"	KM1-3/16	8mm	KM1-8	
	1/4"	KM1-1/4	10mm	KM1-10	
	5/16"	KM1-5/16	12mm	KM1-12	
	3/8"	KM1-3/8	14mm	KM1-14	
	7/16"	KM1-7/16	16mm	KM1-16	
	1/2"	KM1-1/2	18mm	KM1-18	
	9/16"	KM1-9/16	20mm	KM1-20	
	5/8"	KM1-5/8	-	-	
	3/4"	KM1-3/4	-	-	
	7/8"	KM1-7/8	-	-	
	1.1/4"	1/8"	KM1.1/4-1/8	6mm	KM1.1/4-6
		3/16"	KM1.1/4-3/16	8mm	KM1.1/4-8
1/4"		KM1.1/4-1/4	10mm	KM1.1/4-10	
5/16"		KM1.1/4-5/16	12mm	KM1.1/4-12	
3/8"		KM1.1/4-3/8	14mm	KM1.1/4-14	
7/16"		KM1.1/4-7/16	16mm	KM1.1/4-16	
1/2"		KM1.1/4-1/2	18mm	KM1.1/4-18	
9/16"		KM1.1/4-9/16	20mm	KM1.1/4-20	
5/8"		KM1.1/4-5/8	25mm	KM1.1/4-25	
11/16"		KM1.1/4-11/16	-	-	
3/4"		KM1.1/4-3/4	-	-	
7/8"		KM1.1/4-7/8	-	-	
15/16"		KM1.1/4-15/16	-	-	
2"		1/4"	KM2-1/4	-	-
		3/4"	KM2-3/4	-	-
	1"	KM2-1	-	-	
	1-1/4"	KM2-1.1/4	-	-	
	1-1/2"	KM2-1.1/2	-	-	
	1-3/4"	KM2-1.3/4	-	-	
	1-7/8"	KM2-1.7/8	-	-	

Collet Series	Inch		Metric	
	Size	Part Number	Size	Part Number
32mm	1/8"	KM32-1/8	3mm	KM32-3
	3/16"	KM32-3/16	4mm	KM32-4
	1/4"	KM32-1/4	5mm	KM32-5
	5/16"	KM32-5/16	6mm	KM32-6
	3/8"	KM32-3/8	7mm	KM32-7
	7/16"	KM32-7/16	8mm	KM32-8
	1/2"	KM32-1/2	9mm	KM32-9
	9/16"	KM32-9/16	10mm	KM32-10
	5/8"	KM32-5/8	11mm	KM32-11
	11/16"	KM32-11/16	12mm	KM32-12
	3/4"	KM32-3/4	13mm	KM32-13
	7/8"	KM32-7/8	14mm	KM32-14
	1"	KM32-1	15mm	KM32-15
	-	-	16mm	KM32-16
	-	-	17mm	KM32-17
	-	-	18mm	KM32-18
	-	-	19mm	KM32-19
	-	-	20mm	KM32-20
	-	-	21mm	KM32-21
	-	-	22mm	KM32-22
	-	-	23mm	KM32-23
	-	-	24mm	KM32-24
	-	-	25mm	KM32-25
	-	-	26mm	KM32-26
	-	-	27mm	KM32-27
	-	-	28mm	KM32-28
	-	-	29mm	KM32-29
	-	-	30mm	KM32-30

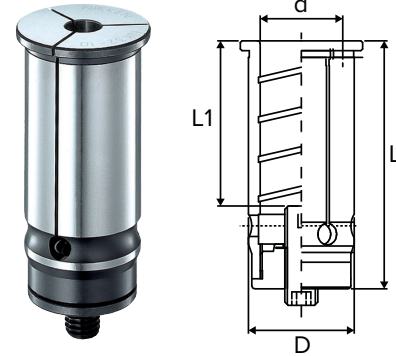
KM COLLET SET

Part Number	Description
KM3/4-SET-09	9 piece set 1/8" - 5/8"
KM3/4-SET-07-MM	7 piece set 6mm - 16mm
KM1-SET-10	10 piece set 1/8" - 7/8"
KM1-SET-08-MM	8 piece set 6mm - 20mm
KM1.1/4-SET-11	11 piece set 3/16" - 1"
KM1.1/4-SET-08-MM	8 piece set 6mm - 25mm
KM32-SET-11	11 piece set 3/16" - 1"
KM32-SET-09-MM	9 piece set 6mm - 26mm

NK COLLETS - DEPTH ADJUSTABLE

Collet Series	D	L	L1	d = Collet Range
NK3/4	0.750"	2.480"	1.968" max. depth	1/8" - 5/8"
NK1	1.000"	2.677"	2.165" max. depth	1/8" - 7/8"
NK1.1/4	1.250"	2.964"	2.401" max. depth	3/16" - 1"
NK32mm	1.259"	2.964"	2.401" max. depth	3/16" - 1"
NK2	2.000"	3.673"	3.110" max. depth	1" - 1.1/2"

Note: Cutter length adjustment on the collet is possible from front and back.



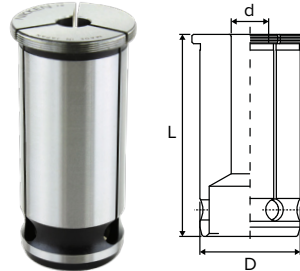
Collet Series	Inch		Metric	
	Size	Part Number	Size	Part Number
3/4"	1/8"	NK3/4-1/8	6mm	NK3/4-6
	3/16"	NK3/4-3/16	7mm	NK3/4-7
	1/4"	NK3/4-1/4	8mm	NK3/4-8
	5/16"	NK3/4-5/16	10mm	NK3/4-10
	3/8"	NK3/4-3/8	12mm	NK3/4-12
	7/16"	NK3/4-7/16	14mm	NK3/4-14
	1/2"	NK3/4-1/2	16mm	NK3/4-16
	9/16"	NK3/4-9/16	-	-
	5/8"	NK3/4-5/8	-	-
1"	1/8"	NK1-1/8	6mm	NK1-6
	3/16"	NK1-3/16	8mm	NK1-8
	1/4"	NK1-1/4	10mm	NK1-10
	5/16"	NK1-5/16	12mm	NK1-12
	3/8"	NK1-3/8	14mm	NK1-14
	7/16"	NK1-7/16	16mm	NK1-16
	1/2"	NK1-1/2	18mm	NK1-18
	5/8"	NK1-5/8	20mm	NK1-20
	3/4"	NK1-3/4	-	-
	7/8"	NK1-7/8	-	-
1.1/4"	3/16"	NK1.1/4-3/16	6mm	NK1.1/4-6
	1/4"	NK1.1/4-1/4	8mm	NK1.1/4-8
	5/16"	NK1.1/4-5/16	9mm	NK1.1/4-9
	3/8"	NK1.1/4-3/8	10mm	NK1.1/4-10
	7/16"	NK1.1/4-7/16	12mm	NK1.1/4-12
	1/2"	NK1.1/4-1/2	14mm	NK1.1/4-14
	9/16"	NK1.1/4-9/16	16mm	NK1.1/4-16
	5/8"	NK1.1/4-5/8	20mm	NK1.1/4-20
	3/4"	NK1.1/4-3/4	25mm	NK1.1/4-25
	7/8"	NK1.1/4-7/8	-	-
	15/16"	NK1.1/4-15/16	-	-

Collet Series	Inch		Metric	
	Size	Part Number	Size	Part Number
2"	1"	NK2-1	21mm	NK32-21
	1-1/4"	NK2-1-1/4	22mm	NK32-22
	1-1/2"	NK2-1-1/2	23mm	NK32-23
	-	-	24mm	NK32-24
	-	-	25mm	NK32-25
	-	-	26mm	NK32-26
32mm	3/16"	NK32-3/16	1mm	NK32-1
	1/4"	NK32-1/4	3mm	NK32-3
	5/16"	NK32-5/16	4mm	NK32-4
	3/8"	NK32-3/8	5mm	NK32-5
	7/16"	NK32-7/16	6mm	NK32-6
	1/2"	NK32-1/2	7mm	NK32-7
	9/16"	NK32-9/16	8mm	NK32-8
	5/8"	NK32-5/8	9mm	NK32-9
	11/16"	NK32-11/16	10mm	NK32-10
	3/4"	NK32-3/4	11mm	NK32-11
	13/16"	NK32-13/16	12mm	NK32-12
	7/8"	NK32-7/8	13mm	NK32-13
	15/16"	NK32-15/16	14mm	NK32-14
	1"	NK32-1	15mm	NK32-15
-	-	16mm	NK32-16	
-	-	17mm	NK32-17	
-	-	18mm	NK32-18	
-	-	19mm	NK32-19	
-	-	20mm	NK32-20	

CCK COOLANT COLLET SYSTEM

Collet Series	L	D	d = Collet Range
3/4"	2.086"	0.750"	1/8" - 5/8"
1"	2.320"	1.000"	1/8" - 7/8"
1.1/4"	2.539"	1.250"	3/16" - 1"
32mm	2.539"	1.259"	3/16" - 1"
2"	3.268"	2.000"	1" - 1.1/2"

Note: CCK Collets do not collapse.



Collet Series	Size	Coolant Collet	Coolant-Thru Nut	Slotted Nut	Disc Wrench
3/4"	1/8"	CCK3/4-1/8	CKFN20(3/4)-1/8C	CKFN20(3/4)-1/8	CCKL20
	3/16"	CCK3/4-3/16	CKFN20(3/4)-3/16C	CKFN20(3/4)-3/16	
	1/4"	CCK3/4-1/4	CKFN20(3/4)-1/4C	CKFN20(3/4)-1/4	
	5/16"	CCK3/4-5/16	CKFN20(3/4)-5/16C	CKFN20(3/4)-5/16	
	3/8"	CCK3/4-3/8	CKFN20(3/4)-3/8C	CKFN20(3/4)-3/8	
	7/16"	CCK3/4-7/16	CKFN20(3/4)-7/16C	CKFN20(3/4)-7/16	
	1/2"	CCK3/4-1/2	CKFN20(3/4)-1/2C	CKFN20(3/4)-1/2	
	9/16"	CCK3/4-9/16	CKFN20(3/4)-9/16C	CKFN20(3/4)-9/16	
	5/8"	CCK3/4-5/8	CKFN20(3/4)-5/8C	CKFN20(3/4)-5/8	
	3/4"	-	CKFN20(3/4)-3/4D	-	
	3/4"	-	CKFN20(3/4)-3/4DC	-	
	6mm	CCK3/4-6	CKFN20(3/4)-6C	CKFN20(3/4)-6	
	7mm	CCK3/4-7	CKFN20(3/4)-7C	CKFN20(3/4)-7	
	8mm	CCK3/4-8	CKFN20(3/4)-8C	CKFN20(3/4)-8	
	10mm	CCK3/4-10	CKFN20(3/4)-10C	CKFN20(3/4)-10	
	12mm	CCK3/4-12	CKFN20(3/4)-12C	CKFN20(3/4)-12	
	14mm	CCK3/4-14	CKFN20(3/4)-14C	CKFN20(3/4)-14	
	16mm	CCK3/4-16	CKFN20(3/4)-16C	CKFN20(3/4)-16	
	20mm	-	CKFN20(3/4)-20DC	-	
	1"	1/8"	CCK1-1/8	CKFN25(1)-1/8C	
3/16"		CCK1-3/16	CKFN25(1)-3/16C	CKFN25(1)-3/16	
1/4"		CCK1-1/4	CKFN25(1)-1/4C	CKFN25(1)-1/4	
5/16"		CCK1-5/16	CKFN25(1)-5/16C	CKFN25(1)-5/16	
3/8"		CCK1-3/8	CKFN25(1)-3/8C	CKFN25(1)-3/8	
7/16"		CCK1-7/16	CKFN25(1)-7/16C	CKFN25(1)-7/16	
1/2"		CCK1-1/2	CKFN25(1)-1/2C	CKFN25(1)-1/2	
9/16"		CCK1-9/16	CKFN25(1)-9/16C	CKFN25(1)-9/16	
5/8"		CCK1-5/8	CKFN25(1)-5/8C	CKFN25(1)-5/8	
3/4"		CCK1-3/4	CKFN25(1)-3/4C	CKFN25(1)-3/4	
7/8"		CCK1-7/8	CKFN25(1)-7/8C	CKFN25(1)-7/8	
1"		-	CKFN25(1)-1D	-	
1"		-	CKFN25(1)-1DC	-	
6mm		CCK1-6	CKFN25(1)-6C	CKFN25(1)-6	
8mm		CCK1-8	CKFN25(1)-8C	CKFN25(1)-8	
10mm		CCK1-10	CKFN25(1)-10C	CKFN25(1)-10	
12mm		CCK1-12	CKFN25(1)-12C	CKFN25(1)-12	
14mm		CCK1-14	CKFN25(1)-14C	CKFN25(1)-14	
16mm		CCK1-16	CKFN25(1)-16C	CKFN25(1)-16	
18mm		CCK1-18	CKFN25(1)-18C	CKFN25(1)-18	
20mm		CCK1-20	CKFN25(1)-20C	CKFN25(1)-20	
25mm		-	CKFN25(1)-25D	-	
25mm		-	CKFN25(1)-25DC	-	

CCK COOLANT COLLET SYSTEM (CONT.)



Collet Series	Size	Coolant Collet	Coolant-Thru Nut	Slotted Nut	Disc Wrench		
1.1/4"	3/16"	CCK1.1/4-3/16	CKFN32(1.1/4)-3/16C	CKFN32(1.1/4)-3/16	CCKL32		
	1/4"	CCK1.1/4-1/4	CKFN32(1.1/4)-1/4C	CKFN32(1.1/4)-1/4			
	5/16"	CCK1.1/4-5/16	CKFN32(1.1/4)-5/16C	CKFN32(1.1/4)-5/16			
	3/8"	CCK1.1/4-3/8	CKFN32(1.1/4)-3/8C	CKFN32(1.1/4)-3/8			
	7/16"	CCK1.1/4-7/16	CKFN32(1.1/4)-7/16C	CKFN32(1.1/4)-7/16			
	1/2"	CCK1.1/4-1/2	CKFN32(1.1/4)-1/2C	CKFN32(1.1/4)-1/2			
	9/16"	CCK1.1/4-9/16	CKFN32(1.1/4)-9/16C	CKFN32(1.1/4)-9/16			
	5/8"	CCK1.1/4-5/8	CKFN32(1.1/4)-5/8C	CKFN32(1.1/4)-5/8			
	3/4"	CCK1.1/4-3/4	CKFN32(1.1/4)-3/4C	CKFN32(1.1/4)-3/4			
	7/8"	CCK1.1/4-7/8	CKFN32(1.1/4)-7/8C	CKFN32(1.1/4)-7/8			
	1"	CCK1.1/4-1	CKFN32(1.1/4)-1C	CKFN32(1.1/4)-1			
	1-1/4"	-	CKFN32(1.1/4)-1.1/4D	-			
	1-1/4"	-	CKFN32(1.1/4)-1.1/4DC	-			
	6mm	CCK1.1/4-6	CKFN32(1.1/4)-6C	CKFN32(1.1/4)-6			
	8mm	CCK1.1/4-8	CKFN32(1.1/4)-8C	CKFN32(1.1/4)-8			
	10mm	CCK1.1/4-10	CKFN32(1.1/4)-10C	CKFN32(1.1/4)-10			
	12mm	CCK1.1/4-12	CKFN32(1.1/4)-12C	CKFN32(1.1/4)-12			
	14mm	CCK1.1/4-14	CKFN32(1.1/4)-14C	CKFN32(1.1/4)-14			
	16mm	CCK1.1/4-16	CKFN32(1.1/4)-16C	CKFN32(1.1/4)-16			
	20mm	CCK1.1/4-20	CKFN32(1.1/4)-20C	CKFN32(1.1/4)-20			
	25mm	CCK1.1/4-25	CKFN32(1.1/4)-25C	CKFN32(1.1/4)-25			
	32mm	-	CKFN32(1.1/4)-32D	-			
	32mm	-	CKFN32(1.1/4)-32DC	-			
	2"	1"	CCK2-1	CKFN50(2)-1C		CKFN50(2)-1	CCKL50
		1-1/4"	CCK2-1.1/4	CKFN50(2)-1.1/4C		CKFN50(2)-1.1/4	
1-1/2"		CCK2-1.1/2	CKFN50(2)-1.1/2C	CKFN50(2)-1.1/2			
1-1/2"		CCK32-3/16	CKFN32(1.1/4)-3/16C	CKFN32(1.1/4)-3/16			
32mm	1/4"	CCK32-1/4	CKFN32(1.1/4)-1/4C	CKFN32(1.1/4)-1/4	CCKL32		
	5/16"	CCK32-5/16	CKFN32(1.1/4)-5/16C	CKFN32(1.1/4)-5/16			
	3/8"	CCK32-3/8	CKFN32(1.1/4)-3/8C	CKFN32(1.1/4)-3/8			
	7/16"	CCK32-7/16	CKFN32(1.1/4)-7/16C	CKFN32(1.1/4)-7/16			
	1/2"	CCK32-1/2	CKFN32(1.1/4)-1/2C	CKFN32(1.1/4)-1/2			
	9/16"	CCK32-9/16	CKFN32(1.1/4)-9/16C	CKFN32(1.1/4)-9/16			
	5/8"	CCK32-5/8	CKFN32(1.1/4)-5/8C	CKFN32(1.1/4)-5/8			
	3/4"	CCK32-3/4	CKFN32(1.1/4)-3/4C	CKFN32(1.1/4)-3/4			
	7/8"	CCK32-7/8	CKFN32(1.1/4)-7/8C	CKFN32(1.1/4)-7/8			
	1"	CCK32-1	CKFN32(1.1/4)-1C	CKFN32(1.1/4)-1			
	1-1/4"	-	CKFN32(1.1/4)-1.1/4D	-			
	1-1/4"	-	CKFN32(1.1/4)-1.1/4DC	-			
	6mm	CCK32-6	CKFN32(1.1/4)-6C	CKFN32(1.1/4)-6			
	8mm	CCK32-8	CKFN32(1.1/4)-8C	CKFN32(1.1/4)-8			
	10mm	CCK32-10	CKFN32(1.1/4)-10C	CKFN32(1.1/4)-10			
	11mm	CCK32-11	CKFN32(1.1/4)-11C	CKFN32(1.1/4)-11			
	12mm	CCK32-12	CKFN32(1.1/4)-12C	CKFN32(1.1/4)-12			
	14mm	CCK32-14	CKFN32(1.1/4)-14C	CKFN32(1.1/4)-14			
	15mm	CCK32-15	CKFN32(1.1/4)-15C	CKFN32(1.1/4)-15			
	16mm	CCK32-16	CKFN32(1.1/4)-16C	CKFN32(1.1/4)-16			
	18mm	CCK32-18	CKFN32(1.1/4)-18C	CKFN32(1.1/4)-18			
	20mm	CCK32-20	CKFN32(1.1/4)-20C	CKFN32(1.1/4)-20			
	24mm	CCK32-24	CKFN32(1.1/4)-24C	CKFN32(1.1/4)-24			
	28mm	CCK32-28	CKFN32(1.1/4)-28C	CKFN32(1.1/4)-28			
	32mm	-	CKFN32(1.1/4)-32D	-			
32mm	-	CKFN32(1.1/4)-32DC	-				

BT SK COLLET CHUCKS

FEATURES

- Feature TiN Bearing Nut which considerably improves cutting rigidity and finish
- Narrow body allows access to tight spaces and hard to reach areas
- Unique high-pressure coolant collet system for higher accuracy and gripping torque
- Longer and steeper collet provides double the clamping force and precision than ER Collet Chucks



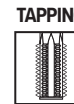
T.I.R.
≤0.0002" at 4xD



Speed
Up to 30,000 rpm



Coolant-Thru
Thru-tool coolant



Please note that the maximum RPM listed in our catalog may vary depending on the toolholder shank, weight, balanceability and the G rating.

BT30

Part Number	Collet Size	Collet Range	Wrench	L (mm)	L	L1	D	D1	Back-Up Screw	Max. RPM	Fig.
BT30-SK6-60	SK6	0.028 - 0.25"	SKL-6W	60	2.36"	1.49"	0.77"	-	SKG-8	15K	7
BT30-SK6-90	SK6	0.028 - 0.25"	SKL-6W	90	3.54"	2.47"	0.77"	1.26"	SKG-8	15K	8
BT30-SK6-120	SK6	0.028 - 0.25"	SKL-6W	120	4.72"	2.63"	0.77"	1.26"	SKG-8	15K	8
BT30-SK10-45	SK10	0.035 - 0.394"	SKL-10	45	1.77"	0.90"	1.08"	-	SKG-12S	15K	7
BT30-SK10-60	SK10	0.035 - 0.394"	SKL-10	60	2.36"	1.52"	1.08"	-	SKG-12L	15K	7
BT30-SK10-90	SK10	0.035 - 0.394"	SKL-10	90	3.54"	2.68"	1.08"	-	SKG-12L	15K	7
BT30-SK13-75	SK13	0.108 - 0.512"	016-SPAN	75	2.95"	2.09"	1.30"	-	SKG-15	15K	7
BT30-SK13-90	SK13	0.108 - 0.512"	016-SPAN	90	3.54"	2.68"	1.30"	-	SKG-15	15K	7
BT30-SK13-120	SK13	0.108 - 0.512"	016-SPAN	120	4.72"	3.86"	1.30"	-	SKG-15	15K	7
BT30-SK16-60	SK16	0.108 - 0.63"	9HC16	60	2.36"	1.47"	1.58"	-	SKG-12L	15K	7
BT30-SK16-90	SK16	0.108 - 0.63"	9HC16	90	3.54"	2.67"	1.58"	-	SKG-12	15K	7
BT30-SK16-120	SK16	0.108 - 0.63"	9HC16	120	4.72"	3.82"	1.58"	-	SKG-18L	15K	7
BT30-SK20-60	SK20	0.138 - 0.787"	9HC22	60	2.36"	1.49"	1.91"	-	SKG-12S	15K	7
BT30-SK20-90	SK20	0.138 - 0.787"	9HC22	90	3.54"	2.67"	1.91"	-	SKG-12	15K	7
BT30-SK25-90	SK25	0.188 - 1.000"	9HC22	90	3.54"	2.67"	2.17"	-	SKG-12	15K	7



Available in **TAPER PLUS+**
Dual-taper and flange contact

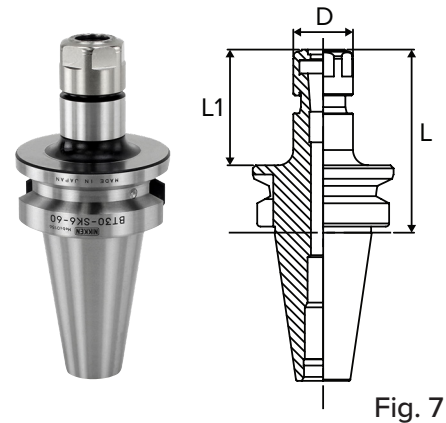


Fig. 7

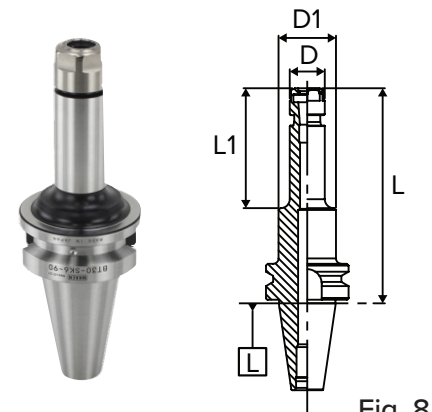


Fig. 8

BT SK COLLET CHUCKS - HIGH-SPEED

BT30 - HIGH-SPEED

Part Number	Collet Size	Collet Range	Wrench	L (mm)	L	L1	D	D1	Back-Up Screw	Max. RPM	Fig.
BT30-SK6-60P	SK6	0.028-0.25"	GH6	60	2.36"	1.49"	0.78"	-	SKG-8	30K	7
BT30-SK6-90P	SK6	0.028-0.25"	GH6	90	3.54"	2.47"	0.78"	1.26"	SKG-8	30K	8
BT30-SK6-120P	SK6	0.028-0.25"	GH6	120	4.72"	2.61"	0.78"	1.26"	SKG-8	30K	8
BT30-SK10-45P	SK10	0.035-0.394"	GH10	45	1.77"	0.90"	1.08"	-	SKG-12S	30K	7
BT30-SK10-60P	SK10	0.035-0.394"	GH10	60	2.36"	1.50"	1.08"	-	SKG-12L	30K	7
BT30-SK10-90P	SK10	0.035-0.394"	GH10	90	3.54"	2.67"	1.08"	-	SKG-12L	30K	7
BT30-SK13-90P	SK13	0.108-0.512"	GH12	90	3.54"	2.69"	1.32"	-	SKG-15	30K	7
BT30-SK16-60P	SK16	0.108-0.63"	GH16	60	2.36"	1.50"	1.59"	-	SKG-12L	30K	7
BT30-SK16-90P	SK16	0.108-0.63"	GH16	90	3.54"	2.67"	1.59"	-	SKG-12	30K	7
BT30-SK16-120P	SK16	0.108-0.63"	GH16	120	4.72"	3.83"	1.59"	-	SKG-18L	25K	7
BT30-SK20-60P	SK20	0.138-0.787"	GH20	60	2.36"	1.49"	1.91"	-	SKG-12S	30K	7
BT30-SK20-90P	SK20	0.138-0.787"	GH20	90	3.54"	2.67"	1.91"	-	SKG-12	25K	7
BT30-SK25-90P	SK25	0.188-1.000"	GH25	90	3.54"	2.67"	2.17"	-	SKG-12	15K	7

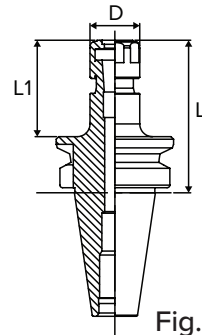


Fig. 7

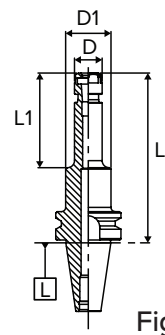


Fig. 8

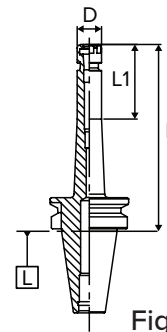


Fig. 9

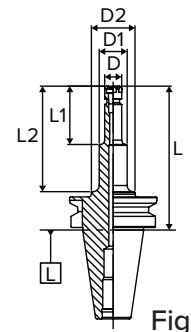
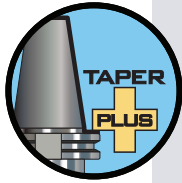


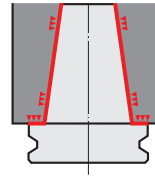
Fig. 10

TAPER PLUS BT SK COLLET CHUCKS



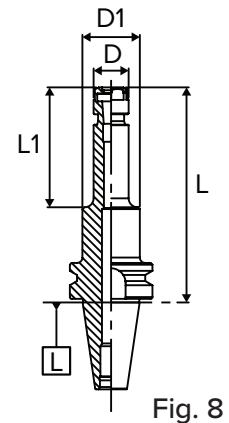
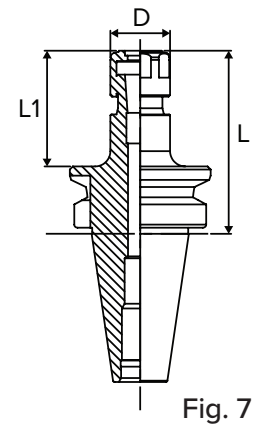
Taper Plus (Dual Contact) Advantages

- Outstanding runout accuracy for longer tool life
- Vibration dampening for increased productivity
- High rigidity for smooth and stable cutting
- Interchangeable between standard and dual face contact spindles
- 53% more surface area contact than just the taper alone

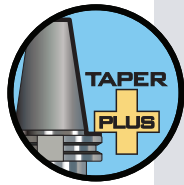


TAPER PLUS - BT30 SK6/10/13/16/20/25

Part Number	Collet Series	Collet Range	Wrench	L (mm)	L	L1	D	D1	Back-Up Screw	Max. RPM	Fig.
NBT30-SK6C-60	SK6	0.028 - 0.25"	SKL-6W	60	2.36"	1.49"	0.77"	-	SKG6-6HG	15K	7
NBT30-SK6C-90	SK6	0.028 - 0.25"	SKL-6W	90	3.54"	2.46"	0.77"	1.26"	SKG6-6HG	15K	8
NBT30-SK6C-120	SK6	0.028 - 0.25"	SKL-6W	120	4.72"	2.63"	0.77"	1.26"	SKG6-6HG	15K	8
NBT30-SK10C-45	SK10	0.035 - 0.394"	SKL-10	45	1.77"	0.90"	1.08"	-	SKG10-10HG	15K	7
NBT30-SK10C-60	SK10	0.035 - 0.394"	SKL-10	60	2.36"	1.49"	1.08"	-	SKG10-10HG	15K	7
NBT30-SK10C-75	SK10	0.035 - 0.394"	SKL-10	75	2.95"	2.08"	1.08"	-	SKG10-10HG	15K	7
NBT30-SK10C-90	SK10	0.035 - 0.394"	SKL-10	90	3.54"	2.67"	1.08"	-	SKG10-10HG	15K	7
NBT30-SK10C-120	SK10	0.035 - 0.394"	SKL-10	120	4.72"	3.85"	1.08"	-	SKG10-10HG	15K	7
NBT30-SK13C-60	SK13	0.108 - 0.512"	016-SPAN	60	2.36"	1.50"	1.30"	-	SKG13-10HG	15K	7
NBT30-SK13C-90	SK13	0.108 - 0.512"	016-SPAN	90	3.54"	2.69"	1.30"	-	SKG13-10HG	15K	7
NBT30-SK13C-120	SK13	0.108 - 0.512"	016-SPAN	120	4.72"	3.86"	1.30"	-	SKG13-10HG	15K	7
NBT30-SK16C-60	SK16	0.108 - 0.63"	9HC16	60	2.36"	1.49"	1.58"	-	SKG16-12HGE	15K	7
NBT30-SK16C-75	SK16	0.108 - 0.63"	9HC16	75	2.95"	2.08"	1.58"	-	SKG16-10HG	15K	7
NBT30-SK16C-90	SK16	0.108 - 0.63"	9HC16	90	3.54"	2.65"	1.58"	-	SKG16-12HG	15K	7
NBT30-SK16C-120	SK16	0.108 - 0.63"	9HC16	120	4.72"	3.85"	1.58"	-	SKG16-12HG	15K	7
NBT30-SK20-60	SK20	0.138 - 0.787"	9HC22	60	2.36"	1.49"	1.91"	-	SKG-12S	15K	7
NBT30-SK20C-75	SK20	0.138 - 0.787"	9HC22	75	2.95"	2.08"	1.91"	-	SKG20-12HGE	15K	7
NBT30-SK20C-90	SK20	0.138 - 0.787"	9HC22	90	3.54"	2.67"	1.91"	-	SKG20-12HG	15K	7
NBT30-SK25-90	SK25	0.188 - 1.000"	9HC22	90	3.54"	2.67"	2.17"	-	SKG-12	15K	7

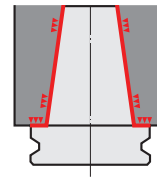


TAPER PLUS BT SLIM CHUCK COOLANT HIGH-SPEED



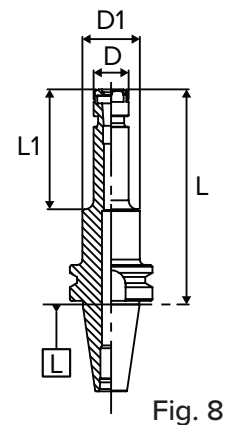
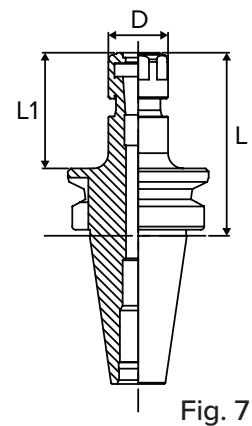
Taper Plus (Dual Contact) Advantages

- Outstanding runout accuracy for longer tool life
- Vibration dampening for increased productivity
- High rigidity for smooth and stable cutting
- Interchangeable between standard and dual face contact spindles
- 53% more surface area contact than just the taper alone



TAPER PLUS - BT30 SK6/10/13/16/20/25-P

Part Number	Collet Series	Collet Range	Wrench	L (mm)	L	L1	D	D1	Back-Up Screw	Max. RPM	Fig.
NBT30-SK6C-60P	SK6	0.028 - 0.25"	GH6	60	2.36"	1.49"	0.78"	-	SKG6-6HG	30K	7
NBT30-SK6C-90P	SK6	0.028 - 0.25"	GH6	90	3.54"	2.47"	0.78"	1.26"	SKG6-6HG	30K	8
NBT30-SK6C-120P	SK6	0.028 - 0.25"	GH6	120	4.72"	2.64"	0.78"	1.26"	SKG6-6HG	30K	8
NBT30-SK10C-45P	SK10	0.035 - 0.394"	GH10	45	1.77"	0.90"	1.08"	-	SKG10-10HG	30K	7
NBT30-SK10C-60P	SK10	0.035 - 0.394"	GH10	60	2.36"	1.49"	1.08"	-	SKG10-10HG	30K	7
NBT30-SK10C-75P	SK10	0.035 - 0.394"	GH10	75	2.95"	2.08"	1.08"	-	SKG10-10HG	30K	7
NBT30-SK10C-90P	SK10	0.035 - 0.394"	GH10	90	3.54"	2.67"	1.08"	-	SKG10-10HG	30K	7
NBT30-SK10C-120P	SK10	0.035 - 0.394"	GH10	120	4.72"	3.88"	1.08"	-	SKG10-10HG	30K	7
NBT30-SK13C-60P	SK13	0.028 - 0.25"	GH12	60	2.36"	1.50"	1.32"	-	SKG13-10HG	30K	7
NBT30-SK13C-90P	SK13	0.028 - 0.25"	GH12	90	3.54"	2.69"	1.32"	-	SKG13-10HG	30K	7
NBT30-SK13C-120P	SK13	0.028 - 0.25"	GH12	120	4.72"	3.87"	1.32"	-	SKG13-10HG	30K	7
NBT30-SK16C-60P	SK16	0.108 - 0.63"	GH16	60	2.36"	1.49"	1.59"	-	SKG16-12HGE	25K	7
NBT30-SK16C-75P	SK16	0.108 - 0.63"	GH16	75	2.95"	2.08"	1.59"	-	SKG16-10HG	25K	7
NBT30-SK16C-90P	SK16	0.108 - 0.63"	GH16	90	3.54"	2.67"	1.59"	-	SKG16-12HG	25K	7
NBT30-SK16C-120P	SK16	0.108 - 0.63"	GH16	120	4.72"	3.83"	1.59"	-	SKG16-12HG	25K	7
NBT30-SK20-60P	SK20	0.138 - 0.787"	GH20	60	2.36"	1.49"	1.91"	-	SKG-12S	25K	7
NBT30-SK20C-75P	SK20	0.138 - 0.787"	GH20	75	2.95"	2.08"	1.91"	-	SKG20-12HGE	25K	7
NBT30-SK20C-90P	SK20	0.138 - 0.787"	GH20	90	3.54"	2.67"	1.91"	-	SKG20-12HG	25K	7
NBT30-SK25-90P	SK25	0.188 - 1.000"	GH25	90	3.54"	2.67"	2.17"	-	SKG-12	20K	7



SK6 COLLETS

Size range: 0.7mm - 6.0mm (0.028 - 0.236")

METRIC

Part Number	Collapse Range (mm)	Collapse Range (in)
SK6-0.8	0.8 - 0.7	0.031 - 0.028"
SK6-1	1 - 0.9	0.039 - 0.035"
SK6-1.25	1.25 - 1.15	0.049 - 0.045"
SK6-1.5	1.5 - 1.3	0.059 - 0.051"
SK6-1.75	1.75 - 1.55	0.069 - 0.061"
SK6-2	2 - 1.8	0.079 - 0.071"
SK6-2.25	2.25 - 2.05	0.089 - 0.081"
SK6-2.5	2.5 - 2.3	0.098 - 0.091"
SK6-2.75	2.75 - 2.55	0.108 - 0.1"
SK6-3	3 - 2.8	0.118 - 0.110"
SK6-3.5	3.5 - 3	0.138 - 0.118"
SK6-4	4 - 3.5	0.157 - 0.138"
SK6-4.5	4.5 - 4	0.177 - 0.157"
SK6-5	5 - 4.5	0.197 - 0.177"
SK6-5.5	5.5 - 5	0.217 - 0.197"
SK6-6	6 - 5.5	0.236 - 0.217"
SK6-SET-16-MM	0.7mm - 6mm SK6 Set	

INCH/METRIC ON-SIZE

Part Number	Size
SK6-1/8A	0.125"
SK6-3/16A	0.188"
SK6-1/4A	0.250"
SK6-2A	0.079"
SK6-3A	0.118"
SK6-4A	0.138"
SK6-5A	0.197"
SK6-6A	0.236"

These are on-size collets with minimal collapsible ranges. A-type collets have an H8 gripping range.



METRIC - COOLANT-THRU

Up to 1000 psi capable.

Part Number	Size
SK6-3AC	3mm
SK6-4AC	4mm
SK6-5AC	5mm
SK6-6AC	6mm

AC-type collets are mechanically sealed, no coolant nuts or disks are required. AC-type collets have an H8 gripping range.

INCH - COOLANT-THRU

Up to 1000 psi capable.

Part Number	Size
SK6-1/8AC	0.125"
SK6-3/16AC	0.188"

AC-type collets are mechanically sealed, no coolant nuts or disks are required. AC-type collets have an H8 gripping range.

SK6 COLLET RACK

Part Number	Description
RACK-ER11/SK6	SK6 collet rack, 35 collets capacity



SK10 COLLETS

Size range: 1.75mm - 10.0mm (0.035 - 0.039")

METRIC

Part Number	Collapse Range (mm)	Collapse Range (in)
SK10-1	1 - 0.9	0.039 - 0.035"
SK10-1.25	1.25 - 1.15	0.049 - 0.045"
SK10-1.5	1.5 - 1.3	0.059 - 0.051"
SK10-1.75	1.75 - 1.55	0.069 - 0.061"
SK10-2	2 - 1.75	0.079 - 0.069"
SK10-2.25	2.25 - 2	0.089 - 0.079"
SK10-2.5	2.5 - 2.25	0.098 - 0.089"
SK10-2.75	2.75 - 2.5	0.098 - 0.108"
SK10-3	3 - 2.75	0.118 - 0.108"
SK10-3.5	3.5 - 3	0.138 - 0.118"
SK10-4	4 - 3.5	0.157 - 0.138"
SK10-4.5	4.5 - 4	0.177 - 0.157"
SK10-5	5 - 4.5	0.197 - 0.177"
SK10-5.5	5.5 - 5	0.217 - 0.197"
SK10-6	6.0 - 5.5	0.236 - 0.217"
SK10-6.2	6.2 - 5.7	0.2446 - 0.224"
SK10-6.5	6.5 - 6	0.256 - 0.236"
SK10-7	7 - 6.5	0.276 - 0.256"
SK10-7.5	7.5 - 7	0.295 - 0.276"
SK10-8	8 - 7.5	0.315 - 0.295"
SK10-8.5	8.5 - 8	0.335 - 0.315"
SK10-9	9 - 8.5	0.354 - 0.335"
SK10-9.5	9.5 - 9	0.374 - 0.354"
SK10-10	10 - 9.5	0.394 - 0.374"
SK10-SET-19-MM	1.75mm - 10mm SK10 Set	

INCH/METRIC ON-SIZE

Part Number	Size
SK10-1/8A	0.125"
SK10-3/16A	0.188"
SK10-1/4A	0.250"
SK10-5/16A	0.312"
SK10-3/8A	0.375"
SK10-3A	0.118"
SK10-4A	0.157"
SK10-5A	0.197"
SK10-6A	0.236"
SK10-8A	0.315"
SK10-10A	0.390"
SK10-SET-05-A	1/8 - 3/8" SK10 Set

These are on-size collets with minimal collapsible ranges. A-type collets have an H8 gripping range.



METRIC - COOLANT-THRU

Up to 1000 psi capable.

Part Number	Size
SK10-3AC	3mm
SK10-4AC	4mm
SK10-5AC	5mm
SK10-6AC	6mm
SK10-7AC	7mm
SK10-8AC	8mm
SK10-9AC	9mm
SK10-10AC	10mm
SK10-SET-08-AC-MM	2.5mm - 10mm SK10 Set

AC-type collets are mechanically sealed, no coolant nuts or disks are required. AC-type collets have an H8 gripping range.

INCH - COOLANT-THRU

Up to 1000 psi capable.

Part Number	Size
SK10-1/8AC	0.125"
SK10-3/16AC	0.188"
SK10-1/4AC	0.250"
SK10-5/16AC	0.312"
SK10-3/8AC	0.375"
SK10-SET-05-AC	1/8 - 3/8" SK10 Set

AC-type collets are mechanically sealed, no coolant nuts or disks are required. AC-type collets have an H8 gripping range.

SK10 COLLET RACK

Part Number	Description
RACK-ER16/SK10	SK10 collet rack, 24 collets capacity



SK13 COLLETS

Size range: 2.5mm - 13.0mm (0.098 - 0.512")

METRIC

Part Number	Collapse Range (mm)	Collapse Range (in)
SK13-3	3 - 2.8	0.118 - 0.110"
SK13-3.5	3.5 - 3	0.138 - 0.118"
SK13-4	4 - 3.5	0.157 - 0.138"
SK13-4.5	4.5 - 4	0.177 - 0.157"
SK13-5	5 - 4.5	0.197 - 0.177"
SK13-5.5	5.5 - 5	0.217 - 0.197"
SK13-6	6 - 5.5	0.236 - 0.217"
SK13-6.5	6.5 - 6	0.256 - 0.236"
SK13-7	7 - 6.5	0.276 - 0.256"
SK13-7.5	7.5 - 7	0.295 - 0.276"
SK13-8	8 - 7.5	0.315 - 0.295"
SK13-8.5	8.5 - 8	0.335 - 0.315"
SK13-9	9 - 8.5	0.354 - 0.335"
SK13-9.5	9.5 - 9	0.374 - 0.354"
SK13-10	10 - 9.5	0.394 - 0.374"
SK13-10.5	10.5 - 10	0.413 - 0.394"
SK13-11	11 - 10.5	0.433 - 0.413"
SK13-11.5	11.5 - 11	0.453 - 0.433"
SK13-12	12 - 11.5	0.472 - 0.453"
SK13-12.5	12.5 - 12	0.492 - 0.472"
SK13-13	13 - 12.5	0.512 - 0.492"
SK13-SET-21-MM	2.5mm - 13mm SK13 Set	

INCH/METRIC ON-SIZE

Part Number	Size
SK13-1/8A	0.125"
SK13-3/16A	0.188"
SK13-1/4A	0.250"
SK13-5/16A	0.312"
SK13-3/8A	0.375"
SK13-7/16A	0.438"
SK13-1/2A	0.500"
SK13-8A	0.315"
SK13-10A	0.390"
SK13-12A	0.472"
SK13-SET-07-A	1/8 - 1/2" SK13 Set

These are on-size collets with minimal collapsible ranges. A-type collets have an H8 gripping range.



METRIC - COOLANT-THRU

Up to 1000 psi capable.

Part Number	Size
SK13-4AC	4mm
SK13-5AC	5mm
SK13-6AC	6mm
SK13-7AC	7mm
SK13-8AC	8mm
SK13-9AC	9mm
SK13-10AC	10mm
SK13-11AC	11mm
SK13-12AC	12mm
SK13-13AC	13mm
SK13-SET-09-AC-MM	5mm - 13mm SK13 Set

AC-type collets are mechanically sealed, no coolant nuts or disks are required. AC-type collets have an H8 gripping range.

INCH - COOLANT-THRU

Up to 1000 psi capable.

Part Number	Size
SK13-1/4AC	0.250"
SK13-5/16AC	0.312"
SK13-3/8AC	0.375"
SK13-7/16AC	0.438"

AC-type collets are mechanically sealed, no coolant nuts or disks are required. AC-type collets have an H8 gripping range.

SK16 COLLETS

Size range: 2.75mm - 16.0mm (0.108 - 0.630")

METRIC

Part Number	Collapse Range (mm)	Collapse Range (in)
SK16-3	3 - 2.75	0.118 - 0.108"
SK16-3.5	3.5 - 3	0.138 - 0.118"
SK16-4	4 - 3.5	0.157 - 0.138"
SK16-4.5	4.5 - 4	0.177 - 0.157"
SK16-5	5 - 4.5	0.197 - 0.177"
SK16-5.5	5.5 - 5	0.217 - 0.197"
SK16-6	6 - 5.5	0.236 - 0.217"
SK16-6.5	6.5 - 6	0.256 - 0.236"
SK16-7	7 - 6.5	0.276 - 0.256"
SK16-7.5	7.5 - 7	0.295 - 0.276"
SK16-8	8 - 7.5	0.315 - 0.295"
SK16-8.5	8.5 - 8	0.335 - 0.315"
SK16-9	9 - 8.5	0.354 - 0.335"
SK16-9.5	9.5 - 9	0.374 - 0.354"
SK16-10	10 - 9.5	0.394 - 0.374"
SK16-10.5	10.5 - 10	0.413 - 0.394"
SK16-11	11 - 10.5	0.433 - 0.413"
SK16-11.5	11.5 - 11	0.453 - 0.433"
SK16-12	12 - 11.5	0.472 - 0.453"
SK16-12.5	12.5 - 12	0.492 - 0.472"
SK16-13	13 - 12.5	0.512 - 0.492"
SK16-13.5	13.5 - 13	0.531 - 0.512"
SK16-14	14 - 13.5	0.551 - 0.531"
SK16-14.5	14.5 - 14	0.571 - 0.551"
SK16-15	15 - 14.5	0.591 - 0.571"
SK16-15.5	15.5 - 15	0.61 - 0.591"
SK16-16	16 - 15.5	0.63 - 0.61"
SK16-SET-27-MM	2.5mm - 16mm SK16 Set	

METRIC - COOLANT-THRU

Up to 1000 psi capable.

Part Number	Size
SK16-6AC	6mm
SK16-7AC	7mm
SK16-8AC	8mm
SK16-9AC	9mm
SK16-10AC	10mm
SK16-11AC	11mm
SK16-12AC	12mm
SK16-13AC	13mm
SK16-14AC	14mm
SK16-15AC	15mm
SK16-16AC	16mm
SK16-SET-11-AC-MM	6mm - 16mm SK16 Set

AC-type collets are mechanically sealed, no coolant nuts or disks are required. AC-type collets have an H8 gripping range.

INCH/METRIC ON-SIZE

Part Number	Size
SK16-1/8A	0.125"
SK16-3/16A	0.188"
SK16-1/4A	0.250"
SK16-5/16A	0.312"
SK16-3/8A	0.375"
SK16-7/16A	0.438"
SK16-1/2A	0.500"
SK16-9/16A	0.563"
SK16-5/8A	0.625"
SK16-3A	0.118"
SK16-4A	0.157"
SK16-5A	0.197"
SK16-6A	0.236"
SK16-8A	0.315"
SK16-10A	0.390"
SK16-12A	0.472"
SK16-14A	0.551"
SK16-16A	0.630"
SK16-SET-09-A	1/8 - 5/8" SK16 Set

These are on-size collets with minimal collapsible ranges. A-type collets have an H8 gripping range.

INCH - COOLANT-THRU

Up to 1000 psi capable.

Part Number	Size
SK16-1/4AC	0.250"
SK16-5/16AC	0.312"
SK16-3/8AC	0.375"
SK16-7/16AC	0.438"
SK16-1/2AC	0.500"
SK16-9/16AC	0.563"
SK16-5/8AC	0.625"

AC-type collets are mechanically sealed, no coolant nuts or disks are required. AC-type collets have an H8 gripping range.

SK16 COLLET RACK

Part Number	Description
RACK-180DA/ SK16/ER25	SK16 collet rack, 30 collets capacity



SK20 COLLETS

Size range: 3.5mm - 20.00mm (0.138 - 0.787")

METRIC

Part Number	Collapse Range (mm)	Collapse Range (in)
SK20-4	4 - 3.5	0.157 - 0.138"
SK20-4.5	4.5 - 4	0.177 - 0.157"
SK20-5	5 - 4.5	0.197 - 0.177"
SK20-5.5	5.5 - 5	0.217 - 0.197"
SK20-6	6 - 5.5	0.236 - 0.217"
SK20-6.5	6.5 - 6	0.256 - 0.236"
SK20-7	7 - 6.5	0.276 - 0.256"
SK20-7.5	7.5 - 7	0.295 - 0.276"
SK20-8	8 - 7.5	0.315 - 0.295"
SK20-8.5	8.5 - 8	0.335 - 0.315"
SK20-9	9 - 8.5	0.354 - 0.335"
SK20-9.5	9.5 - 9	0.374 - 0.354"
SK20-10	10 - 9.5	0.394 - 0.374"
SK20-10.5	10.5 - 10	0.413 - 0.394"
SK20-11	11 - 10.5	0.433 - 0.413"
SK20-11.5	11.5 - 11	0.453 - 0.433"
SK20-12	12 - 11.5	0.472 - 0.453"
SK20-12.5	12.5 - 12	0.492 - 0.472"
SK20-13	13 - 12.5	0.512 - 0.492"
SK20-13.5	13.5 - 13	0.531 - 0.512"
SK20-14	14 - 13.5	0.551 - 0.531"
SK20-14.5	14.5 - 14	0.571 - 0.551"
SK20-15	15 - 14.5	0.591 - 0.571"
SK20-15.5	15.5 - 15	0.61 - 0.591"
SK20-16	16 - 15.5	0.63 - 0.61"
SK20-16.5	16.5 - 16	0.65 - 0.63"
SK20-17	17 - 16.5	0.669 - 0.65"
SK20-17.5	17.5 - 17	0.689 - 0.669"
SK20-18	18 - 17.5	0.709 - 0.689"
SK20-18.5	18.5 - 18	0.728 - 0.709"
SK20-19	19 - 18.5	0.748 - 0.728"
SK20-19.5	19.5 - 19	0.768 - 0.748"
SK20-20	20 - 19.5	0.787 - 0.768"
<hr/>		
SK20-SET-21-MM	9.5mm - 20mm SK20 Set	
SK20-SET-33-MM	3.5mm - 20mm SK20 Set	

INCH/METRIC ON-SIZE

Part Number	Size
SK20-1/8A	0.125"
SK20-3/16A	0.188"
SK20-1/4A	0.250"
SK20-5/16A	0.312"
SK20-3/8A	0.375"
SK20-7/16A	0.438"
SK20-1/2A	0.500"
SK20-9/16A	0.563"
SK20-5/8A	0.625"
SK20-3/4A	0.750"
SK20-4A	0.157"
SK20-6A	0.236"
SK20-8A	0.315"
SK20-10A	0.390"
SK20-12A	0.472"
SK20-16A	0.630"
SK20-20A	0.787"
<hr/>	
SK20-SET-10-A	1/8 - 3/4" SK20 Set



These are on-size collets with minimal collapsible ranges. A-type collets have an H8 gripping range.

METRIC - COOLANT-THRU

Up to 1000 psi capable.

Part Number	Size
SK20-12AC	12mm
SK20-16AC	16mm
SK20-18AC	18mm
SK20-20AC	20mm

AC-type collets are mechanically sealed, no coolant nuts or disks are required. AC-type collets have an H8 gripping range.

INCH - COOLANT-THRU

Up to 1000 psi capable.

Part Number	Size
SK20-7/16AC	0.438"
SK20-1/2AC	0.500"
SK20-9/16AC	0.563"
SK20-5/8AC	0.625"
SK20-3/4AC	0.750"

AC-type collets are mechanically sealed, no coolant nuts or disks are required. AC-type collets have an H8 gripping range.

SK25 COLLETS

Size range: 16mm - 25mm (0.630 - 0.984")

METRIC

Part Number	Collapse Range (mm)	Collapse Range (in)
SK25-8	8 - 7.5	0.315 - 0.295"
SK25-10	10 - 9.5	0.394 - 0.374"
SK25-12	12 - 11.5	0.472 - 0.453"
SK25-16	16 - 15.5	0.63 - 0.61"
SK25-16.5	16.5 - 16	0.65 - 0.63"
SK25-17	17 - 16.5	0.669 - 0.65"
SK25-17.5	17.5 - 17	0.689 - 0.669"
SK25-18	18 - 17.5	0.709 - 0.689"
SK25-18.5	18.5 - 18	0.728 - 0.709"
SK25-19	19 - 18.5	0.748 - 0.728"
SK25-19.5	19.5 - 19	0.768 - 0.748"
SK25-20	20 - 19.5	0.787 - 0.768"
SK25-20.5	20.5 - 20	0.807 - 0.787"
SK25-21	21 - 20.5	0.827 - 0.807"
SK25-21.5	21.5 - 21	0.846 - 0.827"
SK25-22	22 - 21.5	0.866 - 0.846"
SK25-22.5	22.5 - 22	0.886 - 0.866"
SK25-23	23 - 22.5	0.906 - 0.886"
SK25-23.5	23.5 - 23	0.925 - 0.906"
SK25-24	24 - 23.5	0.945 - 0.925"
SK25-24.5	24.5 - 24	0.965 - 0.945"
SK25-25	25 - 24.5	0.984 - 0.965"
SK25-25.4	25.4 - 25	1 - 0.984"
SK25-SET-19-MM	16.0mm - 25.4mm SK25 Set	

METRIC - COOLANT-THRU

Up to 1000 psi capable.

Part Number	Size
SK25-16AC	16.0mm
SK25-20AC	20.0mm
SK25-25AC	25.0mm
SK25-25.4AC	25.4mm

AC-type collets are mechanically sealed, no coolant nuts or disks are required. AC-type collets have an H8 gripping range.

INCH/METRIC ON-SIZE

Part Number	Size
SK25-3/16A	0.188"
SK25-1/4A	0.250"
SK25-5/16A	0.312"
SK25-3/8A	0.375"
SK25-7/16A	0.438"
SK25-1/2A	0.500"
SK25-9/16A	0.563"
SK25-5/8A	0.625"
SK25-3/4A	0.750"
SK25-7/8A	0.875"
SK25-8A	0.315"
SK25-10A	0.390"
SK25-12A	0.472"
SK25-16A	0.630"
SK25-20A	0.787"
SK25-25A	0.984"
SK25-SET-08-A	3/16 - 3/4" SK25 Set

These are on-size collets with minimal collapsible ranges. A-type collets have an H8 gripping range.

INCH - COOLANT-THRU

Up to 1000 psi capable.

Part Number	Size
SK25-3/4AC	0.750"
SK25-7/8AC	0.875"

AC-type collets are mechanically sealed, no coolant nuts or disks are required. AC-type collets have an H8 gripping range.

SK25 COLLET RACK

Part Number	Description
RACK-5C/100TG/SK25	SK25 collet rack, 30 pieces capacity



SK COOLANT COLLET SYSTEM



Collet Chuck	Collet Series	Coolant Nut Part Number	High-Speed Coolant Nut Part Number	Shank Diameter	Coolant-Thru Disk Part Number	Slotted Disk Part Number	Disk Wrench Part Number	Blank Disk (machinable) Part Number
SK6	SK6 Range: 0.7 - 6mm [0.027 - 0.236"]	SKN-6WKJ	SKN-6WKJ (GH)	2.0mm	SKJ6-2C	SKJ6-2	SKJL-6	SKJ6-BLANK
				2.25mm	-	SKJ6-2.25		
				2.5mm	-	SKJ6-2.5		
				3.0mm	SKJ6-3C	SKJ6-3		
				3.5mm	SKJ6-3.5C	SKJ6-3.5		
				4.0mm	SKJ6-4C	SKJ6-4		
				4.5mm	SKJ6-4.5C	SKJ6-4.5		
				5.0mm	SKJ6-5C	SKJ6-5		
				5.5mm	SKJ6-5.5C	SKJ6-5.5		
				6.0mm	SKJ6-6C	SKJ6-6		
				1/8"	SKJ6-1/8C	SKJ6-1/8		
				3/16"	SKJ6-3/16C	SKJ6-3/16		
				1/4"	SKJ6-1/4C	SKJ6-1/4		
				SK10	SK10 Range: 1.75 - 10mm [0.068 - 0.394"]	SKN-10BJ		
3.0mm	SKJ10-3C	SKJ10-3						
3.5mm	SKJ10-3.5C	SKJ10-3.5						
4.0mm	SKJ10-4C	SKJ10-4						
4.5mm	SKJ10-4.5C	SKJ10-4.5						
5.0mm	SKJ10-5C	SKJ10-5						
5.5mm	SKJ10-5.5C	SKJ10-5.5						
6.0mm	SKJ10-6C	SKJ10-6						
6.2mm	SKJ10-6.2C	SKJ10-6.2						
6.5mm	SKJ10-6.5C	SKJ10-6.5						
6.8mm	SKJ10-6.8C	-						
7.0mm	SKJ10-7C	SKJ10-7						
7.5mm	SKJ10-7.5C	SKJ10-7.5						
8.0mm	SKJ10-8C	SKJ10-8						
8.5mm	SKJ10-8.5C	SKJ10-8.5						
9.0mm	SKJ10-9C	SKJ10-9						
9.5mm	SKJ10-9.5C	SKJ10-9.5						
10.0mm	SKJ10-10C	SKJ10-10						
1/8"	SKJ10-1/8C	SKJ10-1/8						
3/16"	SKJ10-3/16C	SKJ10-3/16						
1/4"	SKJ10-1/4C	SKJ10-1/4						
5/16"	SKJ10-5/16C	SKJ10-5/16						
11/32"	SKJ10-11/32C	-						
3/8"	SKJ10-3/8C	SKJ10-3/8						

SK COOLANT COLLET SYSTEM



Collet Chuck	Collet Series	Coolant Nut Part Number	High-Speed Coolant Nut Part Number	Shank Diameter	Coolant-Thru Disk Part Number	Slotted Disk Part Number	Disk Wrench Part Number	Blank Disk (machinable) Part Number
SK13/SK16	SK13 Range: 2.5 - 13mm [0.098 - 0.512"] SK16 Range: 2.75 - 16mm [0.108 - 0.630"]	SKN-16BJ	SKN-16BJ (GH)	3.0mm	SKJ16-3C	SKJ16-3	SKJL-16	SKJ16-BLANK
				3.5mm	SKJ16-3.5C	SKJ16-3.5		
				4.0mm	SKJ16-4C	SKJ16-4		
				4.5mm	-	SKJ16-4.5		
				5.0mm	SKJ16-5C	SKJ16-5		
				5.5mm	-	SKJ16-5.5		
				6.0mm	SKJ16-6C	SKJ16-6		
				6.5mm	-	SKJ16-6.5		
				7.0mm	SKJ16-7C	SKJ16-7		
				8.0mm	SKJ16-8C	SKJ16-8		
				8.5mm	SKJ16-8.5C	SKJ16-8.5		
				9.0mm	SKJ16-9C	SKJ16-9		
				9.5mm	SKJ16-9.5C	SKJ16-9.5		
				10.0mm	SKJ16-10C	SKJ16-10		
				10.3mm	-	SKJ16-10.3		
				10.5mm	SKJ16-10.5C	SKJ16-10.5		
				11.0mm	SKJ16-11C	SKJ16-11		
11.5mm	SKJ16-11.5C	SKJ16-11.5						
12.0mm	SKJ16-12C	SKJ16-12						
12.5mm	SKJ16-12.5C	SKJ16-12.5						
13.0mm	SKJ16-13C	SKJ16-13						
SK16	SK16 Range: 2.75 - 16mm [0.108 - 0.630"]	SKN-16BJ	SKN-16BJ (GH)	13.5mm	SKJ16-13.5C	-	SKJL-16	SKJ16-BLANK
				14.0mm	SKJ16-14C	SKJ16-14		
				14.5mm	SKJ16-14.5C	SKJ16-14.5		
				15.0mm	SKJ16-15C	SKJ16-15		
				15.5mm	-	SKJ16-15.5		
16.0mm	SKJ16-16C	SKJ16-16						
SK13/SK16	SK13 Range: 2.5 - 13mm [0.098 - 0.512"] SK16 Range: 2.75 - 16mm [0.108 - 0.630"]	SKN-16BJ	SKN-16BJ (GH)	1/8"	SKJ16-1/8C	SKJ16-1/8	SKJL-16	SKJ16-BLANK
				3/16"	SKJ16-3/16C	SKJ16-3/16		
				1/4"	SKJ16-1/4C	SKJ16-1/4		
				5/16"	SKJ16-5/16C	SKJ16-5/16		
				3/8"	SKJ16-3/8C	SKJ16-3/8		
				7/16"	SKJ16-7/16C	SKJ16-7/16		
				1/2"	SKJ16-1/2C	SKJ16-1/2		
SK16	SK16 Range: 2.75 - 16mm [0.108 - 0.630"]	SKN-16BJ	SKN-16BJ (GH)	9/16"	SKJ16-9/16C	SKJ16-9/16	SKJL-16	SKJ16-BLANK
				5/8"	SKJ16-5/8C	SKJ16-5/8		

SK COOLANT COLLET SYSTEM



Collet Chuck	Collet Series	Coolant Nut Part Number	High-Speed Coolant Nut Part Number	Shank Diameter	Coolant-Thru Disk Part Number	Slotted Disk Part Number	Disk Wrench Part Number	Blank Disk (machinable) Part Number
SK20/SK25	SK20 Range: 3.5 - 20.0mm [0.138 - 0.787"] SK25 Range: 16.0 - 25.4mm [0.630 - 1.000"] SKJ Disk Range: 8mm - 25mm 3/16 - 1"	SKN-25BJ	SKN-25BJ (GH)	1.0mm	SKJ25-1C	SKJ25-1	SKJL-25	SKJ25-BLANK
				4.0mm	SKJ25-4C	-		
				6.0mm	SKJ25-6C	SKJ25-6		
				7.0mm	-	SKJ25-7		
				8.0mm	SKJ25-8C	SKJ25-8		
				8.5mm	SKJ25-8.5C	-		
				10.0mm	SKJ25-10C	SKJ25-10		
				11.0mm	SKJ25-11C	-		
				12.0mm	SKJ25-12C	SKJ25-12		
				12.5mm	-	SKJ25-12.5		
				14.0mm	SKJ25-14C	SKJ25-14		
				16.0mm	SKJ25-16C	SKJ25-16		
				16.5mm	-	SKJ25-16.5		
				17.0mm	SKJ25-17C	SKJ25-17		
				17.5mm	SKJ25-17.5C	SKJ25-17.5		
				18.0mm	SKJ25-18C	SKJ25-18		
				20.0mm	SKJ25-20C	SKJ25-20		
SK25	SK25 Range: 16.0 - 25.4mm [0.630 - 1.000"]	SKN-25BJ	SKN-25BJ (GH)	22.0mm	-	SKJ25-22	SKJL-25	SKJ25-BLANK
				23.0mm	-	SKJ25-23		
				24.0mm	SKJ25-24C	-		
				25.0mm	SKJ25-25C	SKJ25-25		
SK20/SK25	SK20 Range: 3.5 - 20.0mm [0.138 - 0.787"] SK25 Range: 16.0 - 25.4mm [0.630 - 1.000"]	SKN-25BJ	SKN-25BJ (GH)	3/16"	SKJ25-3/16C	SKJ25-3/16	SKJL-25	SKJ25-BLANK
				1/4"	SKJ25-1/4C	SKJ25-1/4		
				5/16"	SKJ25-5/16C	SKJ25-5/16		
				3/8"	SKJ25-3/8C	SKJ25-3/8		
				7/16"	SKJ25-7/16C	SKJ25-7/16		
				1/2"	SKJ25-1/2C	SKJ25-1/2		
				5/8"	SKJ25-5/8C	SKJ25-5/8		
				11/16"	SKJ25-11/16C	SKJ25-11/16		
3/4"	SKJ25-3/4C	SKJ25-3/4						
SK25	SK25 Range: 16.0 - 25.4mm [0.630 - 1.000"]	SKN-25BJ	SKN-25BJ (GH)	13/16"	SKJ25-13/16C	SKJ25-13/16	SKJL-25	SKJ25-BLANK
				7/8"	SKJ25-7/8C	SKJ25-7/8		
				15/16"	SKJ25-15/16C	SKJ25-15/16		

SK COLLET CHUCK ACCESSORIES

SK COLLET EXTRACTOR

Part Number	Description
SKR-6	SK6 Collet Extractor
SKR-10	SK10 Collet Extractor
SKR-16	SK16 Collet Extractor
SKR-25	SK25 Collet Extractor



REPLACEMENT NUT FOR SK COLLET CHUCK STANDARD STYLE

Part Number	Description
SKN-6WK	Nut for SK6 Collet Chuck
SKN-10K	Nut for SK10 Collet Chuck
SKN-13B	Nut for SK13 Collet Chuck
SKN-16B	Nut for SK16 Collet Chuck
SKN-20B	Nut for SK20 Collet Chuck
SKN-25B	Nut for SK25 Collet Chuck



WRENCH FOR SK COLLET CHUCK

Standard Style Part Number	High-Speed Style Part Number	Description
SKL-6W	GH6	Wrench for SK6 Collet Chuck
SKL-10	GH10	Wrench for SK10 Collet Chuck
016-SPAN	GH12	Wrench for SK13 Collet Chuck
9HC16	GH16	Wrench for SK16 Collet Chuck
9HC22	GH20	Wrench for SK20 Collet Chuck
9HC22	GH25	Wrench for SK25 Collet Chuck


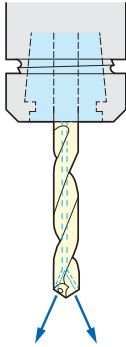

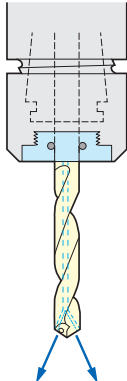

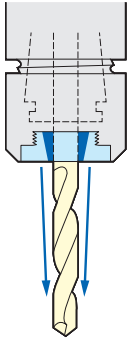


TORQUE WRENCH AND ATTACHMENT FOR SK COLLET CHUCK

Part Number	Description
TQW-025	Torque wrench for SK6 Collet Chuck Nut
TQW-200	Torque wrench for SK10/13/16/20/25 Collet Chuck Nut
TQW-SK06	SK6 attachment for TQW-025 torque wrench
TQW-SK10	SK10 attachment for TQW-200 torque wrench
TQW-ER16/SK13(30)	SK13 attachment for TQW-200 torque wrench
TQW-SK16(45)	SK16 attachment for TQW-200 torque wrench
TQW-ER32/SK20/T675(50)	SK20 attachment for TQW-200 torque wrench
TQW-SK25(55)	SK25 attachment for TQW-200 torque wrench



SLIM CHUCK COOLANT SOLUTION

WITH OIL HOLE DRILL		JET COOLANT SYSTEM	
			
1 Standard Nut + SK-AC Coolant Collet		2 J-TYPE Nut with Standard Collet and J CAP(C)	
			
		3 J-TYPE Nut with Standard Collet and J CAP	

• Please refer to NC catalog for coolant solutions.

BT MMC COLLET CHUCKS

- No nut required.
- Slim, compact nose front clamping allows for greater rigidity and precision gripping.
- High concentricity and repeatability.
- Easy-to-use draw-in collet clamping pulled by standard side wrench.
- Pre-balanced for high-speed applications.



T.I.R.
<.00012" at 4xD



Speed
Up to 30,000 rpm



Coolant-Thru
Thru-tool coolant



Please note that the maximum RPM listed in our catalog may vary depending on the toolholder shank, weight, balanceability and the G rating.

BT30

Part Number	Collet Series	Collet Range	Wrench	L	L1	D	Max. RPM
BT30-MMC4-105-AA	MMC4	0.039 - 0.157" (1 - 4mm)	WRENCH-ALLEN6	4.13"	1.18"	0.59"	30K
BT30-MMC8C-65-AT*	MMC8	0.079 - 0.394" (2 - 10mm)	EA573KL-15	2.56"	1.18"	0.79"	30K
BT30-MMC8C-105-AA	MMC8	0.079 - 0.394" (2 - 10mm)	WRENCH-ALLEN6	4.13"	1.30"	0.79"	30K
BT30-MMC12C-105-AA	MMC12	0.157 - 0.5" (4 - 13mm)	WRENCH-ALLEN6	4.13"	1.38"	1.18"	30K

Notes:

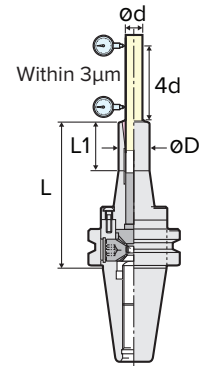
- *Wrench included with holder except for AT-type holders.
- *AT denotes collet is drawn directly from the rear of the holder by a draw bolt.



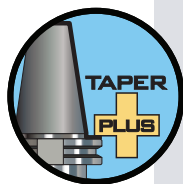
Wrench-THX5
(for AT-Type Chucks)



Wrench-ALLEN6
(for AA-Type Chucks)

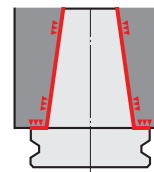


TAPER PLUS BT MMC COLLET CHUCKS



Taper Plus (Dual Contact) Advantages

- Outstanding runout accuracy for longer tool life
- Vibration dampening for increased productivity
- High rigidity for smooth and stable cutting
- Interchangeable between standard and dual face contact spindles
- 53% more surface area contact than just the taper alone

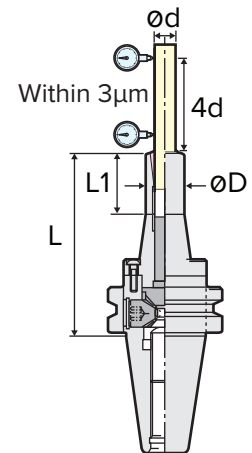


Taper Plus - BT30

Part Number	Collet Series	Collet Range	Wrench	L	L1	D	Max. RPM
NBT30-MMC4-105-AA	MMC4	0.039 - 0.157" (1 - 4mm)	WRENCH-ALLEN6	4.13"	1.18"	0.59"	30K
NBT30-MMC8C-65-AT*	MMC8	0.079 - 0.394" (2 - 10mm)	EA573KL-15	2.56"	1.18"	0.79"	30K
NBT30-MMC8C-105-AA	MMC8	0.079 - 0.394" (2 - 10mm)	WRENCH-ALLEN6	4.13"	1.30"	0.79"	30K
NBT30-MMC12C-105-AA	MMC12	0.157 - 0.5" (4 - 13mm)	WRENCH-ALLEN6	4.13"	1.38"	1.18"	30K

Notes:

- *Wrench included with holder except for AT-type holders.
- *AT denotes collet is drawn directly from the rear of the holder by a draw bolt.



MMC COLLETS

MMC/MPK4 Collets

Part Number	Collet Series	Size
MPK4-1/16*	MPK4	1/16"
MPK4-3/32*	MPK4	3/32"
MPK4-1/8*	MPK4	1/8"
MPK4-1*	MPK4	1.0mm
MPK4-1.5*	MPK4	1.5mm
MPK4-2*	MPK4	2.0mm
MPK4-2.5*	MPK4	2.5mm
MPK4-3*	MPK4	3.0mm
MPK4-3.5*	MPK4	3.5mm
MPK4-4*	MPK4	4.0mm

Notes:

- MMC collets have minimal collapsibility. Highest accuracy and rigidity can be achieved when using cutting tools as close to nominal value as possible.
- *Available in sealed and jet slotted.



MPK4

D:0.394" (10mm)
d:1/16 - 3/32" (1 - 4mm)
L:1.260" (32mm)

PMK8

D:0.591" (15mm)
d:1/8 - 3/8" (2 - 8mm)
L:2.028" (51.5mm)

PMK12

D:0.827" (21mm)
d:3/16 - 1/2" (4 - 12mm)
L:2.205" (56mm)

MMC/PMK Collets

Part Number	Collet Series	Size	Part Number	Collet Series	Size
PMK4-1	PMK4	1.0mm	PMK8-2.4	PMK8	2.4mm
PMK4-1.2	PMK4	1.2mm	PMK8-2.6	PMK8	2.6mm
PMK4-1.4	PMK4	1.4mm	PMK8-3.175	PMK8	3.175mm
PMK4-1.6	PMK4	1.6mm	PMK8-3.2	PMK8	3.2mm
PMK4-1.8	PMK4	1.8mm	PMK8-3.6	PMK8	3.6mm
PMK4-2	PMK4	2.0mm	PMK8-4	PMK8	4.0mm
PMK4-2.2	PMK4	2.2mm	PMK8-4.6	PMK8	4.6mm
PMK4-2.4	PMK4	2.4mm	PMK8-5	PMK8	5.0mm
PMK4-2.6	PMK4	2.6mm	PMK8-5.6	PMK8	5.6mm
PMK4-2.8	PMK4	2.8mm	PMK8-6	PMK8	6.0mm
PMK4-3	PMK4	3.0mm	PMK8-6.4	PMK8	6.4mm
PMK4-3.2	PMK4	3.2mm	PMK8-6.6	PMK8	6.6mm
			PMK8-7	PMK8	7.0mm
			PMK8-7.6	PMK8	7.6mm
			PMK8-7.8	PMK8	7.8mm
			PMK8-8	PMK8	8.0mm
			PMK12-4	PMK12	4.0mm
			PMK12-6	PMK12	6.0mm
			PMK12-10	PMK12	10.0mm
			PMK12-12	PMK12	12.0mm

Features

- Coolant Collets are mechanically sealed.
- No additional accessories are required to make these collets coolant-thru the tool capable.
- 1000 psi high-pressure coolant capable.



VMK: Coolant Sealed Collet
VMK-JB: Jet Slotted Collet
MPK/PMK: Standard Collet

BT SHELL MILL HOLDERS

- Accommodates face mills with pilot diameters ranging from 1/2" (12mm) to 2" (40mm)
- Pilot diameter sized for precision fit with cutter
- Removable/replaceable drive keys as standard
- Fine thread locking screw included
- AT3 or better taper



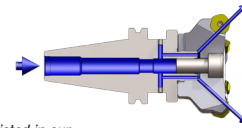
T.I.R.
<.0004" run out at pilot



Coolant-Thru
Thru-pilot (standard)



Speed
Up to 20,000 rpm



MILLING



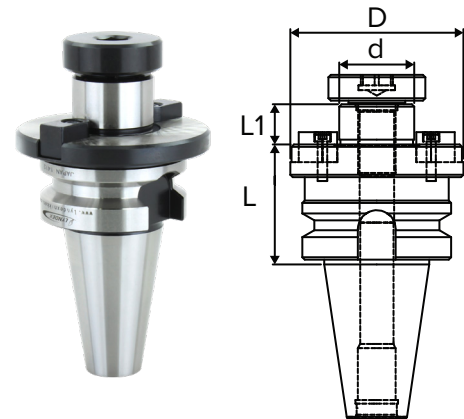
Please note that the maximum RPM listed in our catalog may vary depending on the toolholder shank, weight, balanceability and the G rating.

BT30 - METRIC

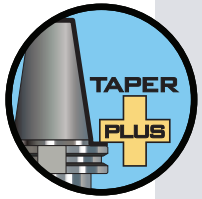
Part Number	d	L	D	L1	Key Size	Arbor Thread
BT30-SMS16-30	16mm	30mm	34mm	14mm	8mm	M8
BT30-SMS22-30	22mm	30mm	45mm	16mm	10mm	M10
BT30-FMC22-40	22mm	40mm	46mm	18mm	10mm	M10
BT30-FMA25.4-45	25.4mm	45mm	50mm	22mm	9.5mm	M12
BT30-SMS27-45	27mm	45mm	50mm	18mm	12mm	M12



Available in **TAPER PLUS+**
Dual-taper and flange contact

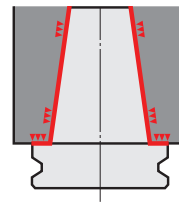


TAPER PLUS BT SHELL MILL HOLDERS



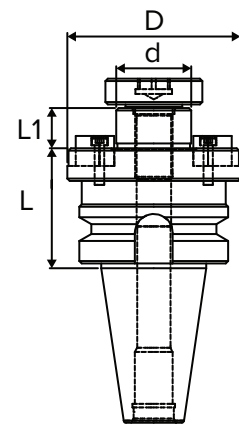
Taper Plus Advantages

- Outstanding runout accuracy for longer tool life
- Vibration dampening for increased productivity
- High rigidity for smooth and stable cutting
- Interchangeable between standard and dual face contact spindles
- 53% more surface area contact than just the taper alone



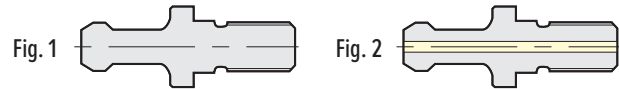
TAPER PLUS - BT30 - METRIC

Part Number	d	L	D	L1	Key Size	Arbor Thread
NBT30-SMA16-30	16mm	30mm	34mm	17mm	8mm	M8
BT30-FMC22-40	22mm	40mm	46mm	18mm	10mm	M10
NBT30-FMA25.4-45	25.4mm	45mm	50mm	22mm	9.5mm	M12
NBT30-FMH27-60-45	27mm	45mm	60mm	20mm	12mm	M12



PULL STUD

Center Through Coolant	Code No.	Fig.
No	PS-16	1
Yes	PS-132	2



SAMPLE: TOOL LAYOUT FOR FANUC SPEEDIO

Tool layout example for FANUC Corporation ROBODRILL α-D21MiB5_{ADV} Plus

MACHINE SPECIFICATIONS:
Flange contact NBT30/
with center through coolant

No.	Product Name	Code No.	Qty.	Remarks	Reference*
1	Slim Chuck	NBT30-SK6C-60	4	Gripping diameter: 0.7-6.0	P195
2	Slim Chuck Collet (Common to Slim Chuck and Major Dream Holder)	SK6-3	2	Gripping diameter: 2.8-3.0	P200
3		SK6-4	2	Gripping diameter: 3.5-4.0	
4		SK6-6	2	Gripping diameter: 5.5-6.0	
5		SKL-6W	1	SK6 tightening spanner	
6	Slim Chuck	NBT30-SK13C-75	8	Gripping diameter: 2.75-13.0	P195
7	Major Dream Holder	NBT30-MDSK13-75	4	Damping mechanism reduces chatter, suitable for end-mill machining.	P201
8	Slim Chuck Collet (Common to Slim Chuck and Major Dream Holder)	SK13-4	3	Gripping diameter: 3.5-4.0, also for M3 tapping	P200
9		SK13-5	1	Gripping diameter: 4.5-5.0, also for M4 tapping	
10		SK13-6	3	Gripping diameter: 5.5-6.0, also for M6 tapping	
11		SK13-6.5	1	Gripping diameter: 6.0-6.5, also for M8 tapping	
12		SK13-7	1	Gripping diameter: 6.5-7.0, also for M10 tapping	
13		SK13-8	3	Gripping diameter: 7.5-8.0	
14		SK13-8.5	1	Gripping diameter: 8.0-8.5, also for M12 tapping	
15		SK13-10	3	Gripping diameter: 9.5-10.0	
16		SK13-12	3	Gripping diameter: 11.5-12.0	
17		Spanner	9HC12A	1	
18	GH Handle	GH12	1	MDSK13 tightening GH Handle	P201
19	Mini-Mini Chuck	NBT30-MMC12C-105-AA	2	Suitable for small diameter end milling and drilling	P193
20	VMK-J Collet (Coolant collet for Mini-Mini Chuck)	VMK12-4J	1	Gripping diameter: 4.0 / for jet coolant	P194
21		VMK12-6J	1	Gripping diameter: 6.0 / for jet coolant	
22		VMK12-8J	1	Gripping diameter: 8.0 / for jet coolant	
23	Milling Chuck	NBT30-C20-75	2	Gripping diameter: 2.0-20.0	P187
24	Spanner	9HC22	1	C20 tightening spanner	P 52
25	Universal Micro Touch	BT30-UMT150	1	Compact type for BT 30 machines	P155
26	Height Presetter	HP-50K	1	Continuity detection type	P159
27	Pull Stud	PS-130E	21	With hole type	P308
28	Tool Clamper	TCL-46GH	1		P162

*The above layout is based on flange contact NBT30 specification. BT30 specification is also available. This is the relevant page of the NC General Catalog.

ABOUT US

At Lyndex-Nikken, we have made it our mission to provide the two most important points to keep you ahead of the competition: advanced technology and the innovation to keep it moving forward. In addition to manufacturing the best machine tool accessories available on the market, our team of highly experienced technicians and product specialists offers unmatched customer service and engineering support to our customers worldwide.



1468 Armour Boulevard | Mundelein, IL 60060
Phone: 847.367.4800 | Fax: 847.367.4815 | sales@lyndexnikken.com
lyndexnikken.com

