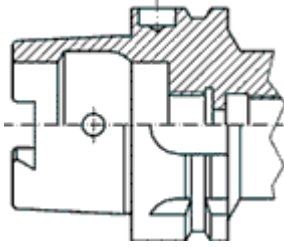
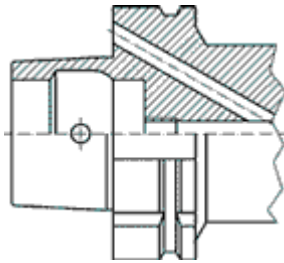


FORM A*:



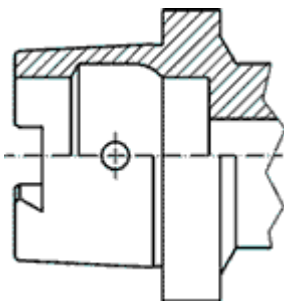
- Standard type for machining centers and milling machines
- For automatic tool change
- Coolant supply through center via coolant tube
- Drive keys at the end of HSK taper
- Hole for data carrier DIN STD. 69873 in the flange

** except for HSK-A 32 all Form A holders are equipped with side holes for manual tool change, they can also be used as form C holders*



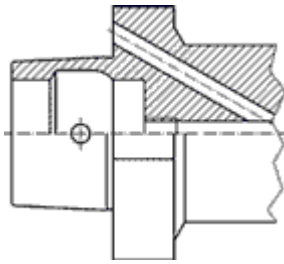
FORM B:

- For machining centers, milling and turning machines
- With enlarged flange size for rigid machining
- For automatic tool change
- Coolant supply through the flange
- Drive keys at the flange
- Hole for data carrier DIN STD 69873 at the flange



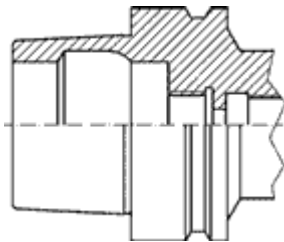
FORM C:

- For transfer lines, special machines and modular tooling systems
- For manual tool change
- Coolant supply through center
- Drive keys at the end of HSK taper



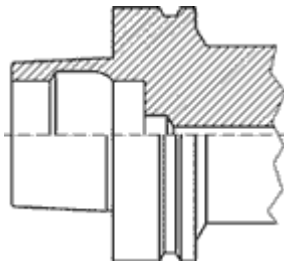
FORM D:

- For special machines
- With enlarged flange size for rigid machining
- For manual tool change
- Coolant supply through the flange
- Drive keys at the flange



FORM E:

- For high-speed applications
- For automatic tool change
- Coolant supply through center via coolant tube is possible
- Without any drive keys for absolute symmetry



FORM F:

- For high-speed applications mainly in woodworking industries
- With enlarged flange size for rigid machining
- For automatic tool change
- Coolant supply through center via coolant tube is possible
- Without any drive keys for absolute symmetry